
\$7.50

MEDIUM DUTY
OPERATIONS, MAINTENANCE,
AND PARTS MANUAL

JERR-DAN

An Oshkosh Truck Corporation Company

1080 Hykes Road

Greencastle, PA 17225

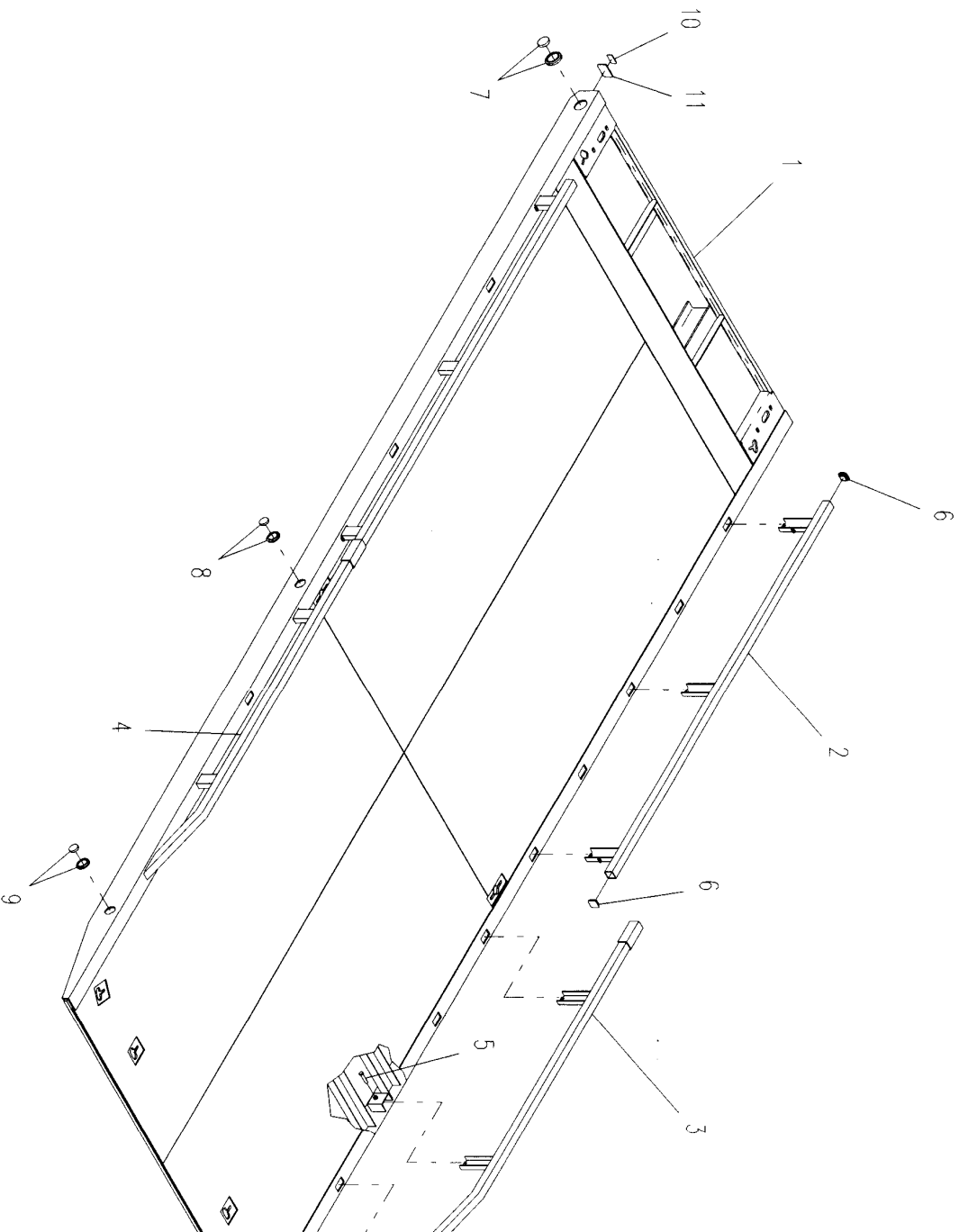
Phone (717) 597-7111

www.jerr-dan.com

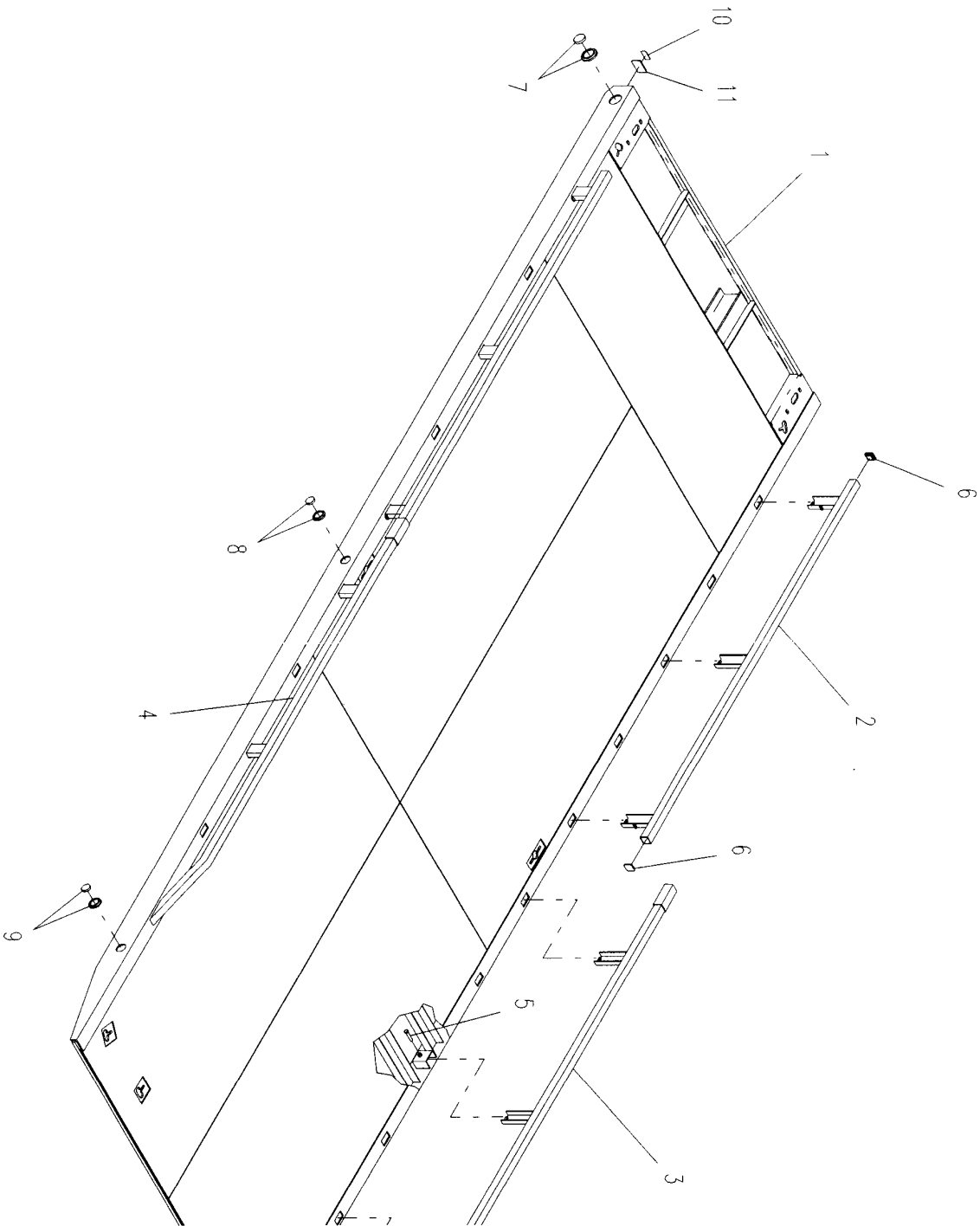
PARTS LIST — 22' DECK

| Ref. No. | Part No. | Description | Qty. |
|-----------------|-----------------|------------------------|-------------|
| 1 | 3097000197 | M15 Steel Deck | 1 |
| | 3097000199 | Transporter Deck | |
| 2 | 3729000126 | Rail - Front | 1 |
| 3 | 3729000128 | Rail - Right Rear | 1 |
| 4 | 3729000127 | Rail - Left Rear | 2 |
| 5 | 7120000005 | Capscrew | 12 |
| 6 | 7701000033 | End Cap | 4 |
| 7 | 7590000045 | Marker Light / Grommet | 2 |
| 8 | 7590000010 | Marker Light / Grommet | 2 |
| 9 | 7590000079 | Marker Light / Grommet | 2 |
| 10 | 7590000090 | Marker Light | 2 |
| 11 | 7493000010 | Grommet | 2 |

22' DECK



24' DECK



PARTS LIST — 24' DECK

| Ref. No. | Part No. | Description | Qty. |
|-----------------|-----------------|------------------------|-------------|
| 1 | 3097000198 | M15 Steel Deck | 1 |
| | 3097000200 | Transporter Deck | |
| 2 | 3729000126 | Rail - Front | 1 |
| 3 | 3729000130 | Rail - Right Rear | 1 |
| 4 | 3729000129 | Rail - Left Rear | 2 |
| 5 | 7120000005 | Capscrew | 12 |
| 6 | 7701000033 | End Cap | 4 |
| 7 | 7590000010 | Marker Light / Grommet | 2 |
| 8 | 7590000045 | Marker Light / Grommet | 2 |
| 9 | 7590000079 | Marker Light / Grommet | 2 |
| 10 | 7590000090 | Marker Light | 2 |
| 11 | 7493000010 | Grommet | 2 |

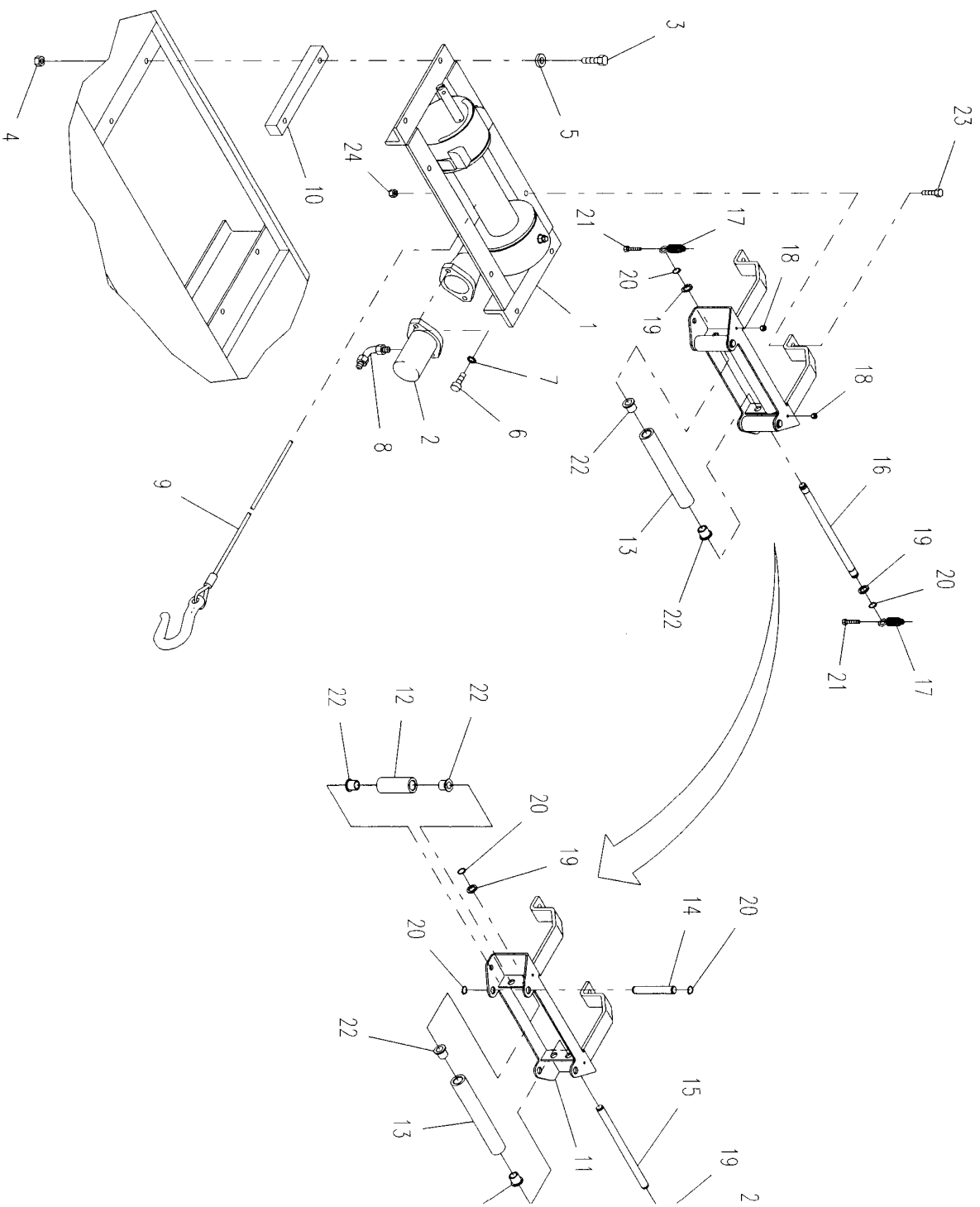
PARTS LIST — WINCH & CABLE ROLLER GUIDE

| Ref. No. | Part No. | Description | Qty. |
|----------|-------------------------|----------------|------|
| 1 | 7970000072 | Winch | 1 |
| 2 | 7626000014 | Orbit Motor | 1 |
| 3 | 7115181450 | Capscrew | 4 |
| | 7115182650 [*] | Capscrew | 4 |
| 4 | 7660182301 | Locknut | 4 |
| 5 | 7950180153 | Flatwasher | 4 |
| 6 | 9970414952 | Capscrew | 2 |
| 7 | 7950180400 | Lockwasher | 2 |
| 8 | 7445081045 | Fitting | 2 |
| 9 | 7248000044 | Cable | 1 |
| 10 | 4062000318 [*] | Bar | 2 |
| 11 | 3178000238 [†] | Bracket | 1 |
| 12 | 4912000087 [†] | Roller Tube | 2 |
| 13 | 4912000130 [†] | Roller Tube | 2 |
| 14 | 4806000011 [†] | Roller Shaft | 2 |
| 15 | 4806000014 [†] | Roller Shaft | 1 |
| 16 | 4806000015 [†] | Roller Shaft | 1 |
| 17 | 7843000007 [†] | Spring | 2 |
| 18 | 7660141600 [†] | Locknut | 2 |
| 19 | 7949000034 [†] | Spacer | 4 |
| 20 | 7754000022 [†] | Retaining Ring | 8 |
| 21 | 7111141407 [†] | Bolt | 2 |
| 22 | 7209000011 [†] | Bushing | 8 |
| 23 | 7115181250 | Capscrew | 4 |
| 24 | 7660182601 | Locknut | 4 |

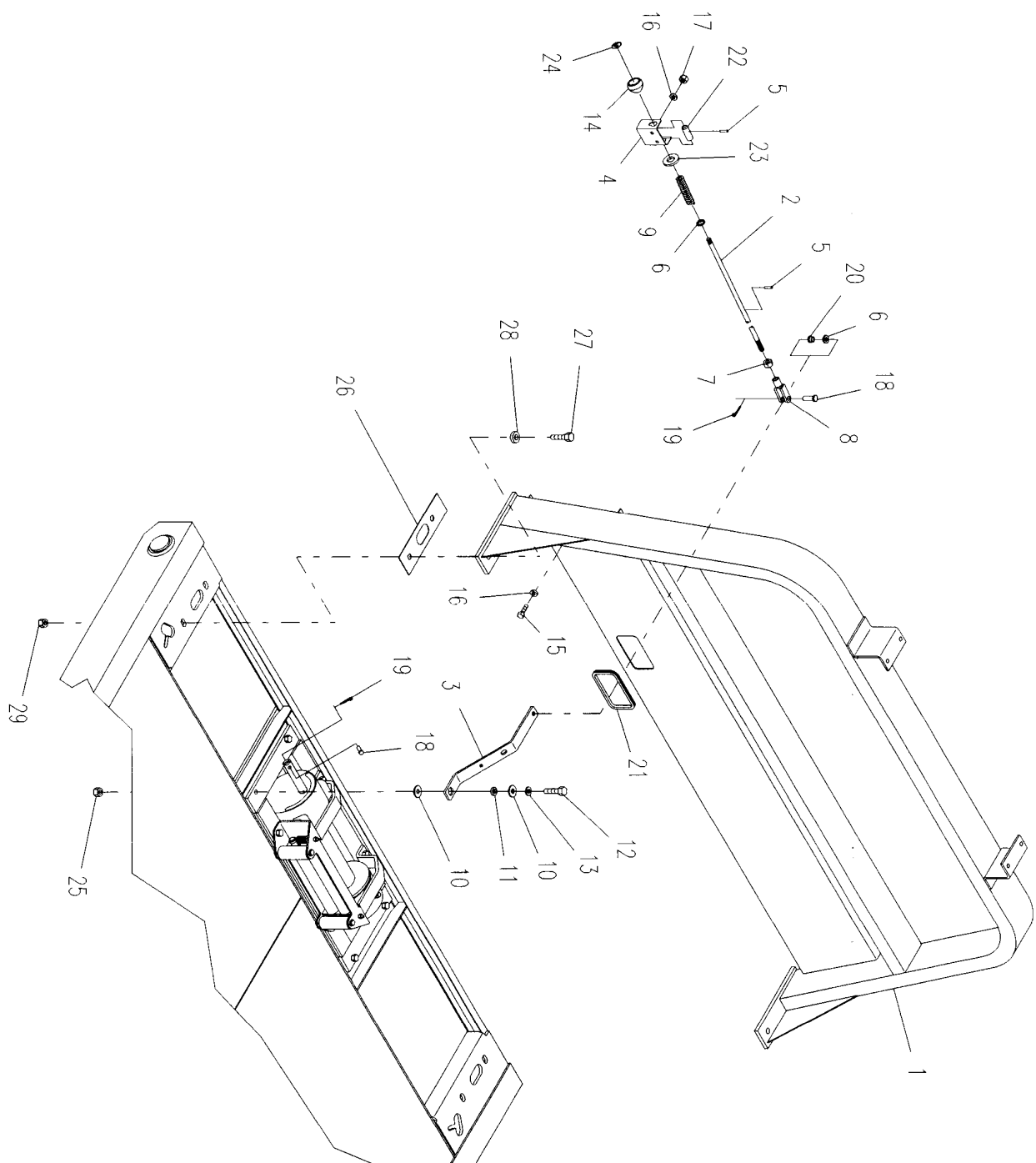
^{*} Available on Transporter Decks only

[†] Also Available in Assembly #3249000004

WINCH & CABLE ROLLER GUIDE



STANDARD HEADBOARD & WINCH FREE POOL



4.8

Rev. _____
Date _____

PARTS LIST — STANDARD HEADBOARD & WINCH FREE SPOOL

| Ref. No. | Part No. | Description | Qty. |
|----------|-------------------------|-----------------------------|------|
| 1 | 3241000081 | Standard Headboard (34.50") | 1 |
| | 3241000082 | Standard Headboard (40.50") | |
| | 3241000083 | Standard Headboard (45.50") | |
| | 3241000084 | Standard Headboard (52.50") | |
| 2 | 4763000199 ¹ | Rod | 1 |
| 3 | 4706001955 ¹ | Lever | 1 |
| 4 | 4706001956 ¹ | Bracket | 1 |
| 5 | 7690051274 ¹ | Spring Pin | 2 |
| 6 | 7950180143 ¹ | Flatwasher | 2 |
| 7 | 7660180234 ¹ | Nut | 1 |
| 8 | 7990000011 ¹ | Yoke | 1 |
| 9 | 7843000023 ¹ | Spring | 1 |
| 10 | 7082000010 ¹ | Nylon Washer | 2 |
| 11 | 4209000146 ¹ | Bushing | 1 |
| 12 | 7115181650 ¹ | Capscrew | 1 |
| 13 | 7950180161 ¹ | Flatwasher | 1 |
| 14 | 7551000013 ¹ | Knob | 1 |
| 15 | 7115150850 ¹ | Capscrew | 2 |
| 16 | 7950150161 ¹ | Flatwasher | 4 |
| 17 | 7660152601 ¹ | Locknut | 2 |
| 18 | 7690182201 ¹ | Clevis Pin | 2 |
| 19 | 7690051611 ¹ | Cotter Pin | 2 |
| 20 | 7082000009 ¹ | Bearing Flange | 1 |
| 21 | 4632000009 ¹ | Trim Lok | 1 |
| 22 | 4209000147 ¹ | Bushing | 1 |
| 23 | 7949000030 ¹ | Nylon Washer | 1 |
| 24 | 7330000255 ¹ | Decal | 1 |
| 25 | 7660182301 | Locknut | 1 |
| 26 | 4796000037 | Gasket | 2 |
| 27 | 7105201650 | Capscrew | 4 |
| 28 | 7950200152 | Flatwasher | 4 |
| 29 | 7660200035 | Nut | 2 |

¹ Also Available in Assembly #2970000021

PARTS LIST — DELUXE HEADBOARD & WINCH FREE SPOOL

| Ref. No. | Part No. | Description | Qty. |
|----------|-------------------------|---------------------------------|------|
| 1 | 3241000085 | Deluxe Headboard (34.50") | 1 |
| | 3241000086 | Deluxe Headboard (40.50") | |
| | 3241000087 | Deluxe Headboard (45.50") | |
| | 3241000088 | Deluxe Headboard (52.50") | |
| 2 | 4763000199 ¹ | Rod | 1 |
| 3 | 4706001955 ¹ | Lever | 1 |
| 4 | 4706001956 ¹ | Bracket | 1 |
| 5 | 7690051274 ¹ | Spring Pin | 2 |
| 6 | 7950180143 ¹ | Flatwasher | 2 |
| 7 | 7660180234 ¹ | Nut | 1 |
| 8 | 7990000011 ¹ | Yoke | 1 |
| 9 | 7843000023 ¹ | Spring | 1 |
| 10 | 7082000010 ¹ | Nylon Washer | 2 |
| 11 | 4209000146 ¹ | Bushing | 1 |
| 12 | 7115181650 ¹ | Cap screw | 1 |
| 13 | 7950180161 ¹ | Flatwasher | 1 |
| 14 | 7551000013 ¹ | Knob | 1 |
| 15 | 7115150850 ¹ | Cap screw | 2 |
| 16 | 7950150161 ¹ | Flatwasher | 4 |
| 17 | 7660152601 ¹ | Locknut | 2 |
| 18 | 7690182201 ¹ | Clevis Pin | 2 |
| 19 | 7690051611 ¹ | Cotter Pin | 2 |
| 20 | 7082000009 ¹ | Bearing Flange | 1 |
| 21 | 4632000009 ¹ | Trim Lok | 1 |
| 22 | 4209000147 ¹ | Bushing | 1 |
| 23 | 7949000030 ¹ | Nylon Washer | 1 |
| 24 | 7330000255 ¹ | Decal | 1 |
| 25 | 7660182301 | Locknut | 1 |
| 26 | 4796000037 | Gasket | 2 |
| 27 | 7105201650 | Cap screw | 4 |
| 28 | 7950200152 | Flatwasher | 4 |
| 29 | 7660200035 | Nut | 2 |
| 30 | 3391000013 | Screen (34.50") | 1 |
| | 3391000014 | Screen (40.50 & 45.50") | |
| | 3391000015 | Screen (52.50") | |
| 31 | 4796000004 | Gasket (34.50") | 1 |
| | 4796000003 | Gasket (40.50, 45.50, & 52.50") | |
| 32 | 7759000013 | Rivet | 6 |

¹ Also Available in Assembly #2970000021

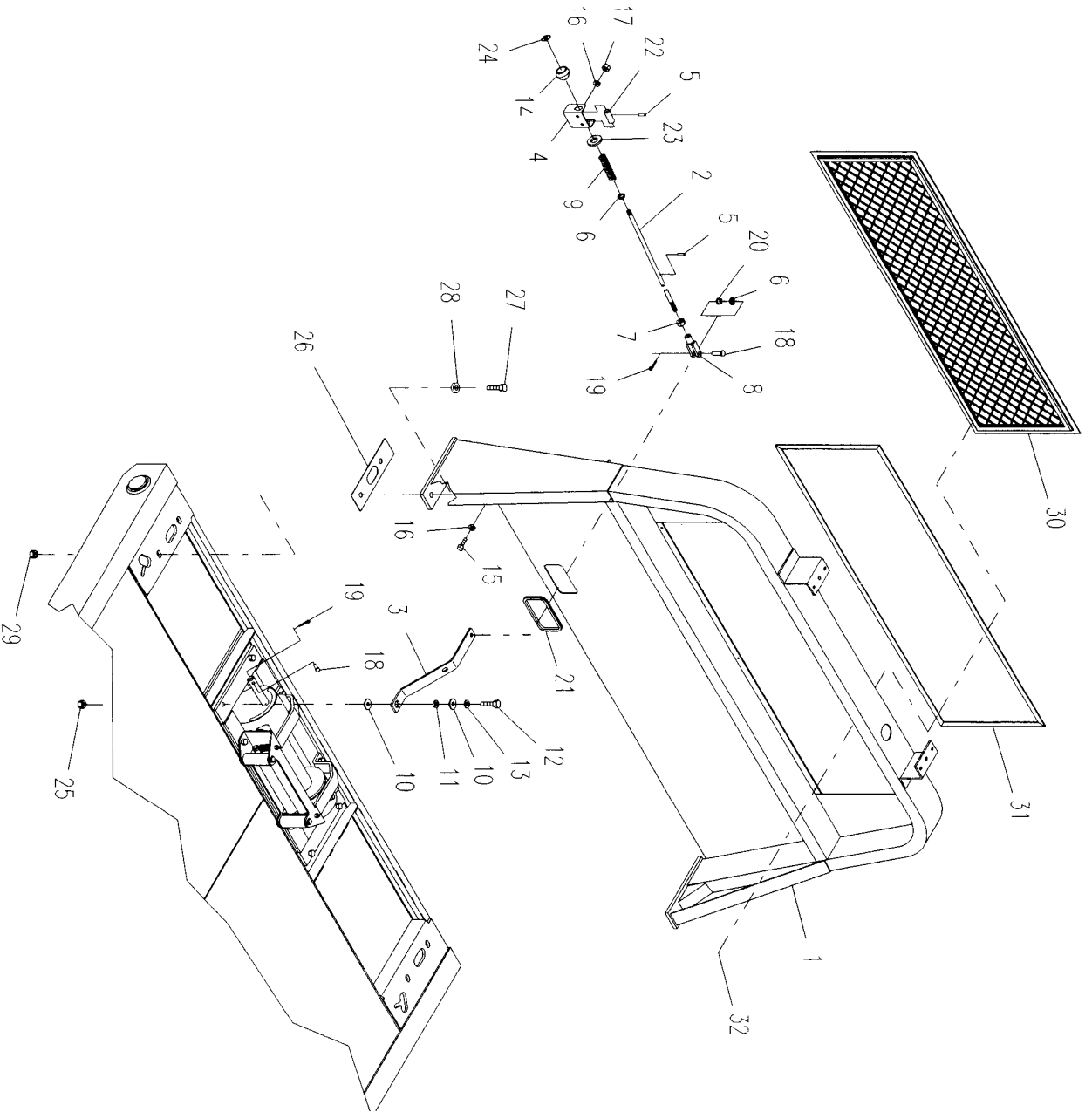


4.10

Rev. _____

Date _____

DELUXE HEADBOARD & WINCH FREE SPOOL



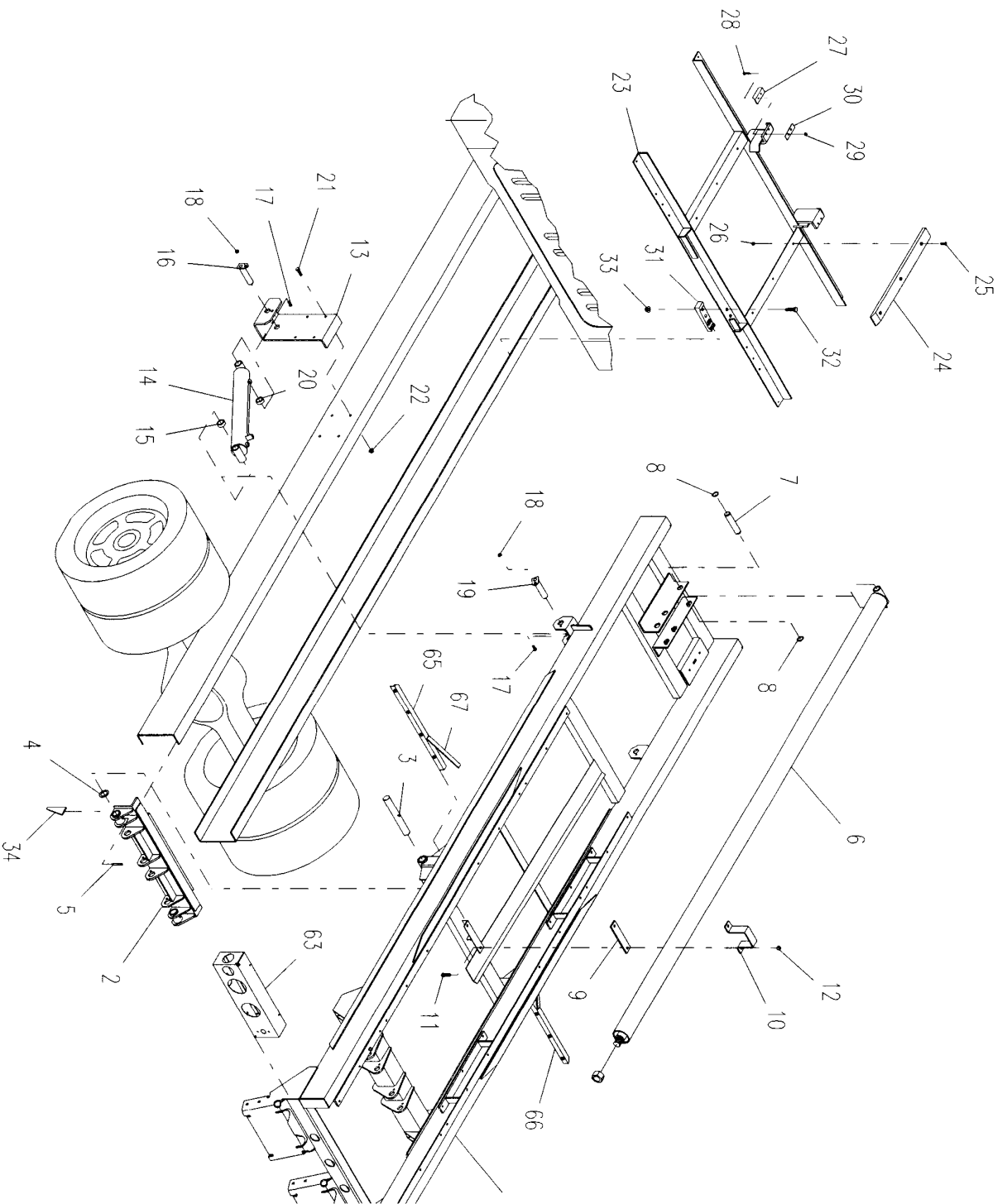
4.11

Rev. _____
Date _____

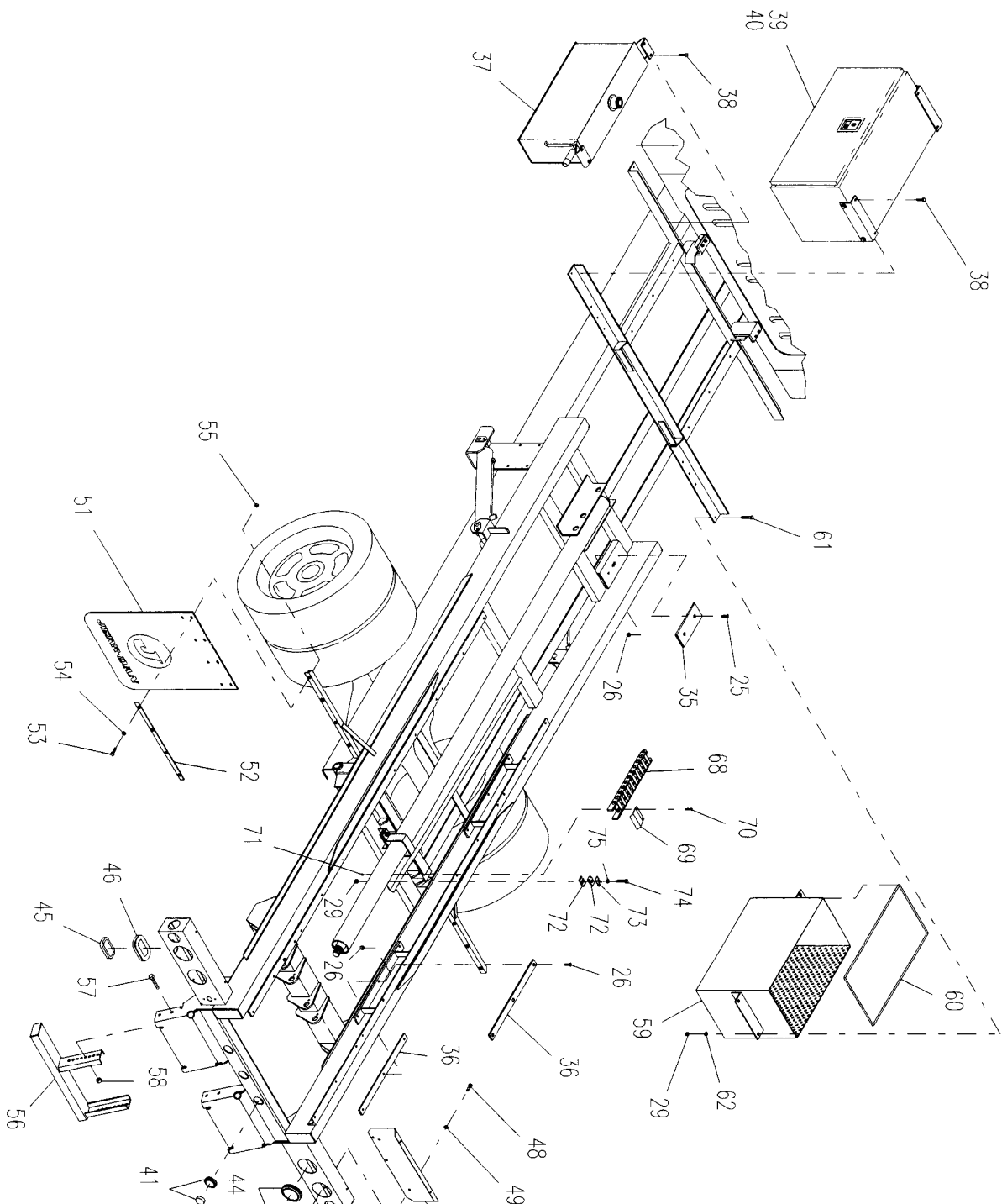
PARTS LIST — FINAL ASSEMBLY

| Ref. No. | Part No. | Description | Qty. | Ref. No. | Part No. | Description | Qty. |
|----------|-------------|---------------------------------------|------|----------|------------|---------------------|------|
| 1 | 3868000178 | Subframe | 1 | 51 | 7638000004 | Mud Flap | 2 |
| 2 | 3905000004 | Turnion | 1 | 52 | 4706000233 | Back Up Strip | 2 |
| 3 | 4691000295 | Pin | 2 | 53 | 7111150813 | Screw | 8 |
| 4 | 7949000008 | Washer | 2 | 54 | 7950150000 | Washer | 8 |
| 5 | 7690164045 | Spring Pin | 2 | 55 | 7660150000 | Nut | 8 |
| 6 | 3320000074 | Cylinder Assembly | 1 | 56 | 3190000028 | Bumper Tube - Short | 2 |
| 7 | 4691000268 | Pin | 1 | | 3190000030 | Bumper Tube - Long | |
| 8 | 7754000006 | Retaining Flng | 1 | 57 | 7115181064 | Locknut | 8 |
| 9 | 4679000166 | Wear Pad | 2 | 58 | 7660182601 | Locknut | 8 |
| 10 | 4178000308 | Bracket | 1 | 59 | 3899000053 | Storage Basket | 1 |
| 11 | 7115181450 | Capcrew | 1 | 60 | 4692000015 | Moulding | 1 |
| 12 | 7660181601 | Locknut | 2 | 61 | 7115150850 | Capcrew | 4 |
| 13 | 4178000305 | Saddle | 2 | 62 | 7950150161 | Washer | 4 |
| 14 | 3320000073 | Cylinder Assy | 2 | 63 | 3178000233 | Light Box L.H. | 1 |
| 15 | 4209000020 | Bushing | 2 | 64 | 3178000234 | Light Box R.H. | 1 |
| 16 | 3691000092 | Pin | 2 | 65 | 4017000825 | Angle L.H. | 1 |
| 17 | 7115160850 | Capcrew | 2 | 66 | 4017000826 | Angle R.H. | 1 |
| 18 | 7660162301 | Flanged Locknut | 4 | 67 | 4705000062 | Brace | 2 |
| 19 | 3691000166 | Pin | 4 | 68 | 4904000002 | Cable Carrier | 1 |
| 20 | 4209000093 | Bushing | 2 | 69 | 4706003038 | Plate | 1 |
| 21 | 7105181450 | Capcrew | 2 | 70 | 7114101618 | Screw | 2 |
| 22 | 760182333 | Flanged Locknut | 8 | 71 | 7660102604 | Nut | 2 |
| 23 | 3558000003 | Hold Down | 1 | 72 | 7274000038 | Half Clamp | 2 |
| 24 | 4679000153 | Wear Pad | 1 | 73 | 7274000039 | Clamp Cover | 1 |
| 25 | 7118161023 | Capcrew | 2 | 74 | 7115151650 | Capcrew | 1 |
| 26 | 76600162601 | Locknut | 46 | 75 | 7950150161 | Washer | 1 |
| 27 | 4679000167 | Wear Pad | 2 | | | | |
| 28 | 7115151218 | Capcrew | 4 | | | | |
| 29 | 7660152601 | Locknut | 4 | | | | |
| 30 | 4812000059 | Shim | 5 | | | | |
| 31 | 7274000046 | Retaining Clamp | 2 | | | | |
| 32 | 7105201850 | Capcrew | 2 | | | | |
| 33 | 7660202347 | Locknut | 8 | | | | |
| 34 | 4497000358 | Gusset | 8 | | | | |
| 35 | 4679000154 | Wear Pad | 2 | | | | |
| 36 | 4679000145 | Wear Pad | 2 | | | | |
| 37 | 3750000018 | Oil Reservoir | 12 | | | | |
| 38 | 7790161253 | Screw | 1 | | | | |
| 39 | 3899000050 | Toolbox 36" with Steel Door | 8 | | | | |
| 40 | 3899000051 | Toolbox 36" with Stainless Steel Door | 1 | | | | |
| 41 | 4679000033 | Rubber Pad | 1 | | | | |
| 42 | 7590000079 | Red Marker Light | 3 | | | | |
| 43 | 7590000009 | Red Marker Light | 4 | | | | |
| 44 | 7590000002 | Stop/Turn/Tail Light | 2 | | | | |
| 45 | 7590000003 | Back-up Light | 2 | | | | |
| 46 | 7590000103 | License Plate Light | 1 | | | | |
| 47 | 7493000010 | Grommet | 1 | | | | |
| 48 | 4314000043 | Cover | 2 | | | | |
| 49 | 7111140513 | Screw | 8 | | | | |
| 50 | 7949000023 | Washer | 8 | | | | |
| | 7661000019 | U-Nut | 8 | | | | |

FINAL ASSEMBLY



FINAL ASSEMBLY



PARTS LIST — DUAL CONTROLS

| Ref. No. | Part No. | Description | Qty. |
|----------|------------|------------------------------------|------|
| 1 | 3935000065 | Control Valve (A) | 1 |
| | 3935000066 | Control Valve (B) | |
| | 3935000067 | Control Valve (C) | |
| | 3935000068 | Control Valve (D) | |
| 2 | 4263000430 | Channel (A,B,C) | 1 |
| | 4263000433 | Channel (D) | 1 |
| 3 | 7111161050 | Capscrew | 4 |
| 4 | 7950160151 | Washer | 4 |
| 5 | 7660162601 | Locknut | 4 |
| 6 | 4263000431 | Channel (A,B,C) | 1 |
| | 4263000434 | Channel (D) | 1 |
| 7 | 7790151253 | Screw | 12 |
| 8 | 3560000005 | Control Hood | 2 |
| 9 | 7330000169 | Control Panel Placard - LH (A,B,C) | 1 |
| | 7330000219 | Control Panel Placard - LH (D) | 1 |
| | 7330000170 | Control Panel Placard - RH (A,B,C) | 1 |
| 10 | 7330000220 | Control Panel Placard - RH (D) | 1 |
| | 7759000004 | Rivet | 8 |
| 12 | 7590000087 | Lamp | 2 |
| 13 | 7790101276 | Screw | 4 |
| 14 | 4606000065 | Lug | 4 |
| 15 | 7111150864 | Carriage Bolt | 8 |
| 16 | 7950150000 | Lock Washer | 8 |
| 17 | 7660152601 | Locknut (A) | 17 |
| | 7660152601 | Locknut (B) | 20 |
| | 7660152601 | Locknut (C) | 23 |
| | 7660152601 | Locknut (D) | 26 |
| 18 | 3551000042 | Handle (C,D) | 2 |
| 19 | 3551000040 | Handle (B,C,D) | 2 |
| 20 | 3551000043 | Handle (A,B,C) | 2 |
| | 3551000044 | Handle (D) | 2 |
| 21 | 3551000045 | Handle (D) | 2 |
| 22 | 3551000039 | Handle | 2 |
| 23 | 3551000041 | Handle | 2 |
| 24 | 7082000005 | Bushing (A) | 12 |
| | 7082000005 | Bushing (B) | 16 |
| | 7082000005 | Bushing (C) | 20 |
| | 7082000005 | Bushing (D) | 24 |
| 25 | 7950220141 | Washer | 2 |
| 26 | 4691000141 | Pin (A,B,C) | 2 |
| | 4691000263 | Pin (D) | 2 |
| 27 | 7754000009 | Retaining Ring | 4 |
| 28 | 7551000003 | Knob - Red | 2 |
| 29 | 7551000002 | Knob - Black (A) | 4 |
| | 7551000002 | Knob - Black (B) | 6 |
| | 7551000002 | Knob - Black (C) | 8 |
| | 7551000002 | Knob - Black (D) | 10 |
| 30 | 3763000090 | Control Rod (A) | 3 |
| | 3763000090 | Control Rod (B) | 4 |
| | 3763000090 | Control Rod (C) | 5 |
| | 3763000090 | Control Rod (D) | 6 |



4.15

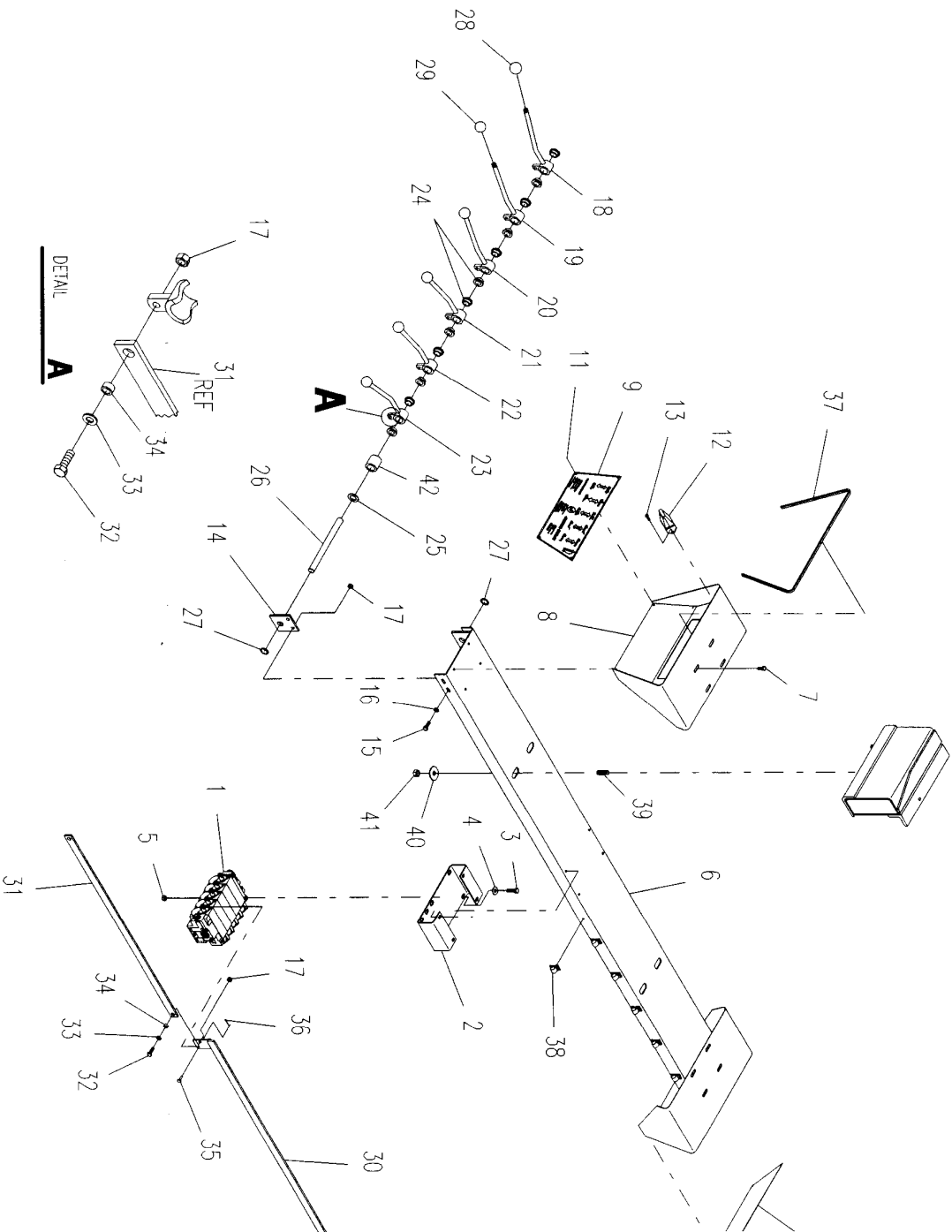
Rev. _____
Date _____

PARTS LIST — DUAL CONTROLS

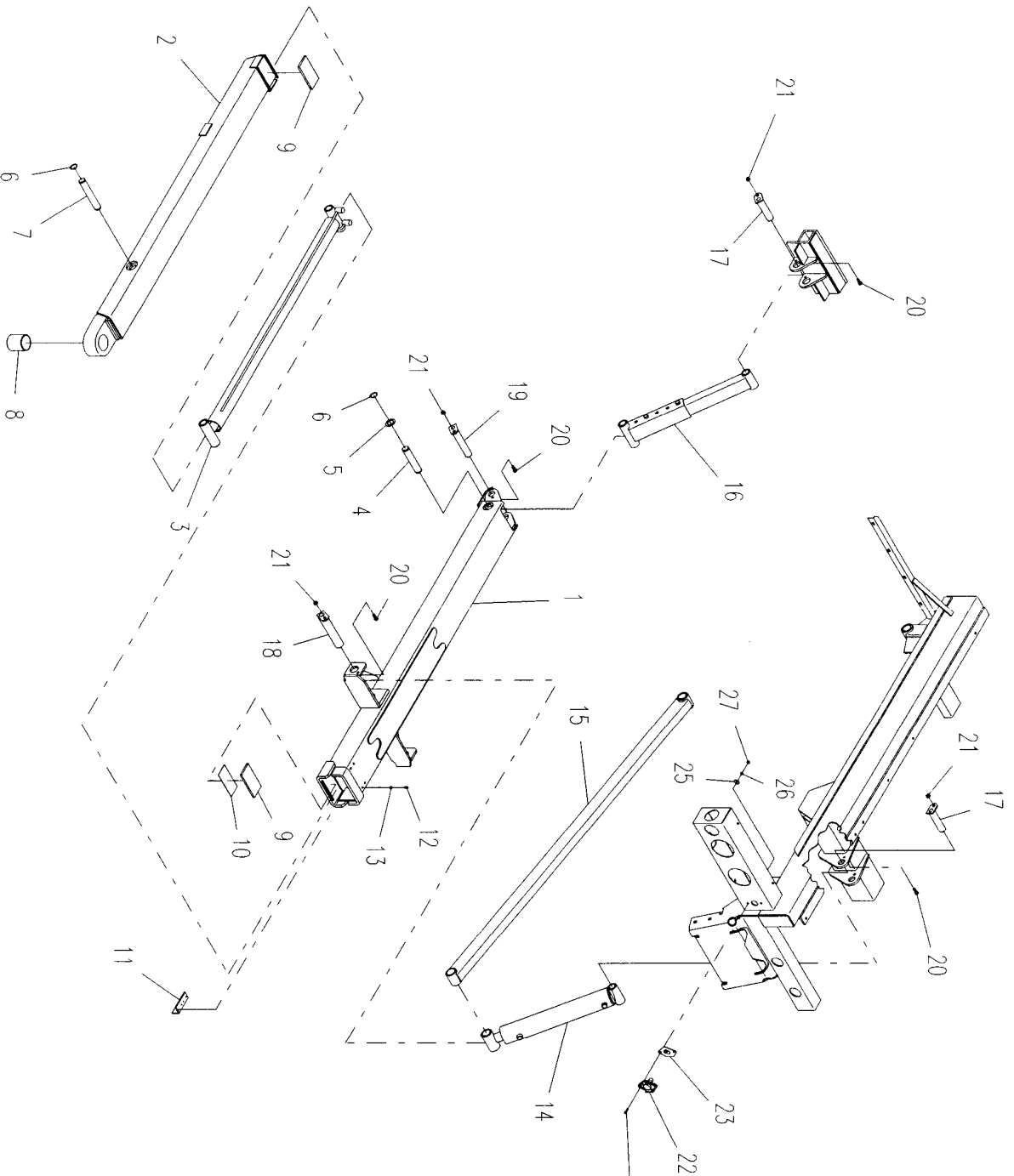
| Ref. No. | Part No. | Description | Qty. |
|----------|------------|-----------------|------|
| 31 | 4763000210 | Control Rod (A) | 3 |
| | 4763000210 | Control Rod (B) | 4 |
| | 4763000210 | Control Rod (C) | 5 |
| | 4763000210 | Control Rod (D) | 6 |
| 32 | 7115150850 | Capscrew (A) | 9 |
| | 7115150850 | Capscrew (B) | 12 |
| | 7115150850 | Capscrew (C) | 15 |
| | 7115150850 | Capscrew (D) | 18 |
| 33 | 7949000011 | Washer (A) | 9 |
| | 7949000011 | Washer (B) | 12 |
| | 7949000011 | Washer (C) | 15 |
| | 7949000011 | Washer (D) | 18 |
| 34 | 4831000069 | Spacer (A) | 9 |
| | 4931000069 | Spacer (B) | 12 |
| | 4831000069 | Spacer (C) | 15 |
| | 4831000069 | Spacer (D) | 18 |
| 35 | 7690101200 | Clevis Pin (A) | 3 |
| | 7690101200 | Clevis Pin (B) | 4 |
| | 7690101200 | Clevis Pin (C) | 5 |
| | 7690101200 | Clevis Pin (D) | 6 |
| 36 | 7690000810 | Cotter Pin (A) | 3 |
| | 7960000810 | Cotter Pin (B) | 4 |
| | 7690000810 | Cotter Pin (C) | 5 |
| | 7690000810 | Cotter Pin (D) | 6 |
| 37 | 4632000004 | Moulding | 2 |
| 38 | 7280000007 | Wire Clip | 11 |
| 39 | 7866184240 | Stud | 4 |
| 40 | 7950180161 | Washer | 4 |
| 41 | 7660181601 | Locknut | 4 |
| 42 | 4209000021 | Bushing (A) | 2 |
| | 4209000021 | Bushing (B) | 4 |

A - Application with 3 Bank Valve
 B - Application with 4 Bank Valve
 C - Application with 5 Bank Valve
 D - Application with 6 Bank Valve

DUAL CONTROLS



3000# IRL WHEELLIFT



PARTS LIST — 3000# IRL WHEELLIFT

| Ref. No. | Part No. | Description | Qty. |
|----------|------------|---------------------|------|
| 1 | 3170000162 | Outer Boom Weldment | 1 |
| 2 | 3911000046 | Inner Boom Weldment | 1 |
| 3 | 3320000064 | Cylinder Assembly | 1 |
| 4 | 4691000268 | Pin | 1 |
| 5 | 7919000026 | Washer | 2 |
| 6 | 7754000006 | Retaining Ring | 4 |
| 7 | 4691000296 | Pin | 1 |
| 8 | 7209000030 | Bushing | 1 |
| 9 | 4679000046 | Wear Pad | 2 |
| 10 | 4706002195 | Plate | 1 |
| 11 | 4017000739 | Angle | 2 |
| 12 | 7118140418 | Capscrew | 4 |
| 13 | 7950100151 | Washer | 4 |
| 14 | 3320000069 | Cylinder Assembly | 2 |
| 15 | 3020000057 | Arm Weldment | 2 |
| 16 | 3592000027 | Adjustable Link | 1 |
| 17 | 3691000164 | Pin | 2 |
| 18 | 3691000073 | Pin | 3 |
| 19 | 3691000069 | Pin | 1 |
| 20 | 7115160850 | Capscrew | 6 |
| 21 | 7660162301 | Locknut | 6 |
| 22 | 7291000003 | Receptacle | 1 |
| 23 | 7796000048 | Gasket | 1 |
| 24 | 7111140613 | Screw | 2 |
| 25 | 7950140161 | Washer | 2 |
| 26 | 7950140000 | Lockwasher | 2 |
| 27 | 7660140000 | Nut | 2 |



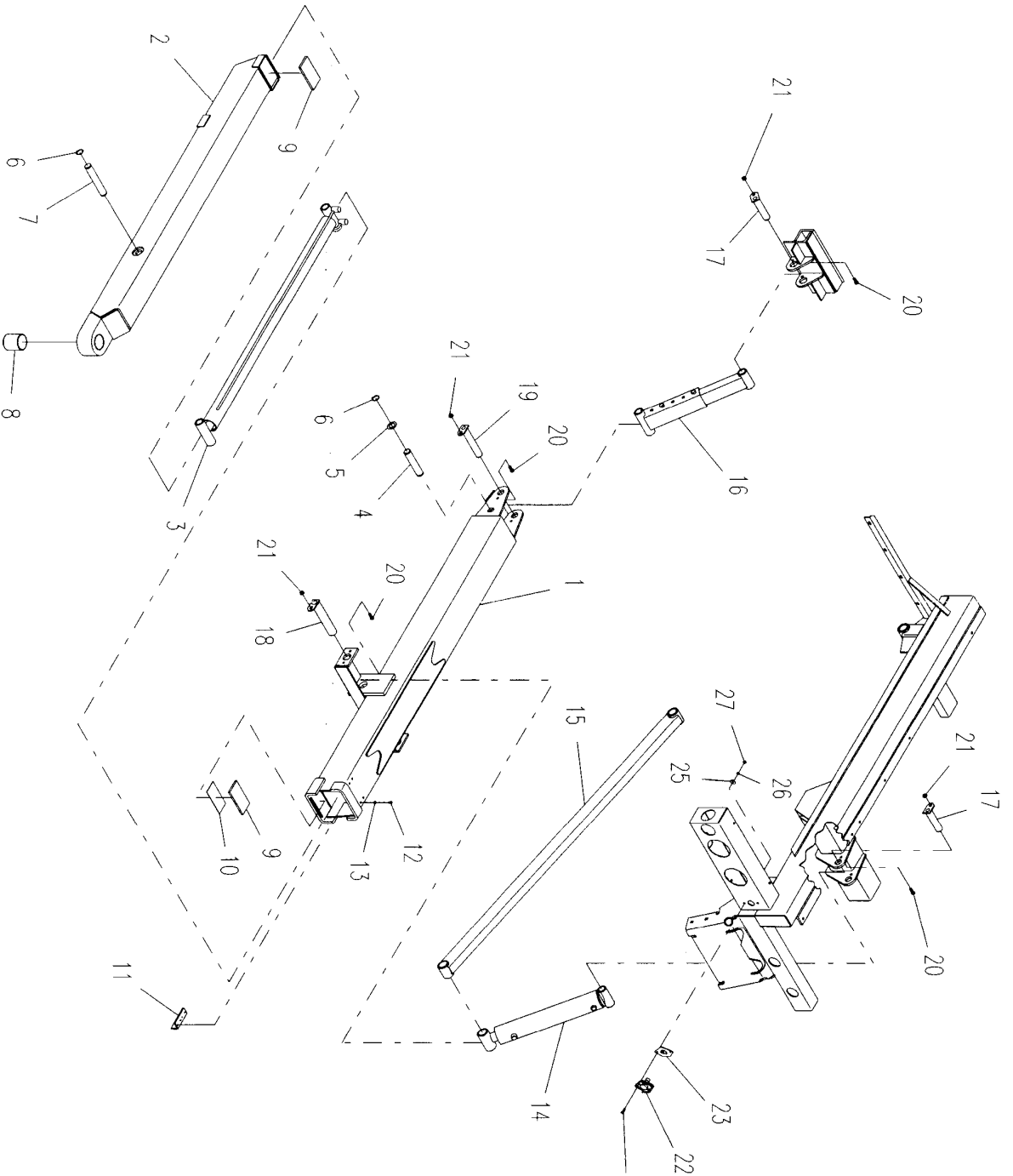
4.19

Rev. _____
Date _____

PARTS LIST — 3000# ZOD WHEELIFT

| Ref. No. | Part No. | Description | Qty. |
|-----------------|-----------------|---------------------|-------------|
| 1 | 3170000162 | Outer Boom Weldment | 1 |
| 2 | 3911000046 | Inner Boom Weldment | 1 |
| 3 | 3320000064 | Cylinder Assembly | 1 |
| 4 | 4691000268 | Pin | 1 |
| 5 | 7919000026 | Washer | 2 |
| 6 | 7754000006 | Retaining Ring | 4 |
| 7 | 4691000296 | Pin | 1 |
| 8 | 7209000030 | Bushing | 1 |
| 9 | 4679000046 | Wear Pad | 2 |
| 10 | 4706002195 | Plate | 1 |
| 11 | 4017000739 | Angle | 2 |
| 12 | 7118140418 | Capscrew | 4 |
| 13 | 7950100151 | Washer | 4 |
| 14 | 3320000069 | Cylinder Assembly | 2 |
| 15 | 3020000057 | Arm Weldment | 2 |
| 16 | 3320000070 | Cylinder Assembly | 1 |
| 17 | 3691000164 | Pin | 2 |
| 18 | 3691000073 | Pin | 3 |
| 19 | 3691000069 | Pin | 1 |
| 20 | 7115160850 | Capscrew | 6 |
| 21 | 7660162301 | Locknut | 6 |
| 22 | 7291000003 | Receptacle | 1 |
| 23 | 7796000048 | Gasket | 1 |
| 24 | 7111140613 | Screw | 2 |
| 25 | 7950140161 | Washer | 2 |
| 26 | 7950140000 | Lockwasher | 2 |
| 27 | 7660140000 | Nut | 2 |

4000# IRL WHEELLIFT



PARTS LIST — 4000# IRL WHEELLIFT

| Ref. No. | Part No. | Description | Qty. |
|----------|------------|---------------------|------|
| 1 | 3170000163 | Outer Boom Weldment | 1 |
| 2 | 3170000164 | Inner Boom Weldment | 1 |
| 3 | 3320000064 | Cylinder Assembly | 1 |
| 4 | 4691000268 | Pin | 1 |
| 5 | 7919000026 | Washer | 2 |
| 6 | 7754000006 | Retaining Ring | 4 |
| 7 | 4691000296 | Pin | 1 |
| 8 | 7209000028 | Bushing | 1 |
| 9 | 4679000046 | Wear Pad | 2 |
| 10 | 4706002195 | Plate | 1 |
| 11 | 4017000739 | Angle | 2 |
| 12 | 7118140418 | Capscrew | 4 |
| 13 | 7950100151 | Washer | 4 |
| 14 | 3320000071 | Cylinder Assembly | 2 |
| 15 | 3020000058 | Arm Weldment | 2 |
| 16 | 3592000029 | Adjustable Link | 1 |
| 17 | 3691000164 | Pin | 2 |
| 18 | 3691000073 | Pin | 3 |
| 19 | 3691000069 | Pin | 1 |
| 20 | 7115160850 | Capscrew | 6 |
| 21 | 7660162301 | Locknut | 6 |
| 22 | 7291000003 | Receptacle | 1 |
| 23 | 7796000048 | Gasket | 1 |
| 24 | 7111140613 | Screw | 2 |
| 25 | 7950140161 | Washer | 2 |
| 26 | 7950140000 | Lockwasher | 2 |
| 27 | 7660140000 | Nut | 2 |



4.23

Rev. _____
Date _____

PARTS LIST — 3000# WHEELLIFT GRID ASSEMBLY

| Ref. No. | Part No. | Description | Qty. |
|-----------------|-----------------|--------------------|-------------|
| 1 | 3913000057 | Pivot Tube (A) | 1 |
| | 3913000056 | Pivot Tube (B) | |
| 2 | 4691000278 | Pin | 1 |
| 3 | 4949000047 | Washer | 2 |
| 4 | 7754000024 | Retaining Ring | 1 |
| 5 | 3484000034 | Grid Weldment - RH | 1 |
| 6 | 3484000035 | Grid Weldment - LH | 1 |
| 7 | 3020000072 | L-Arm | 2 |
| 8 | 3551000036 | T-Handle | 2 |
| 9 | 7894000034 | Ratchet and Strap | 2 |

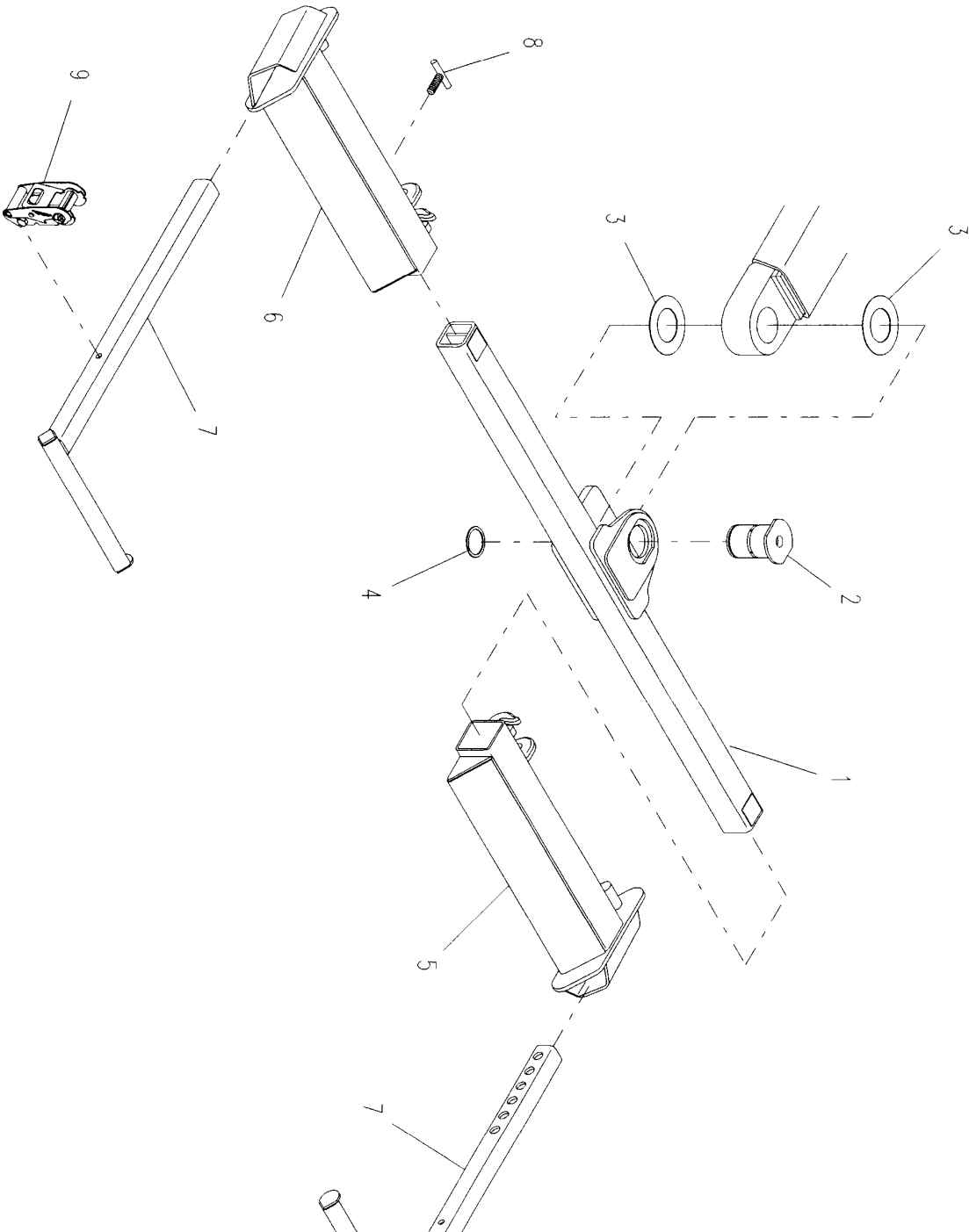
A - IRL Wheelift
B - ZOD Wheelift



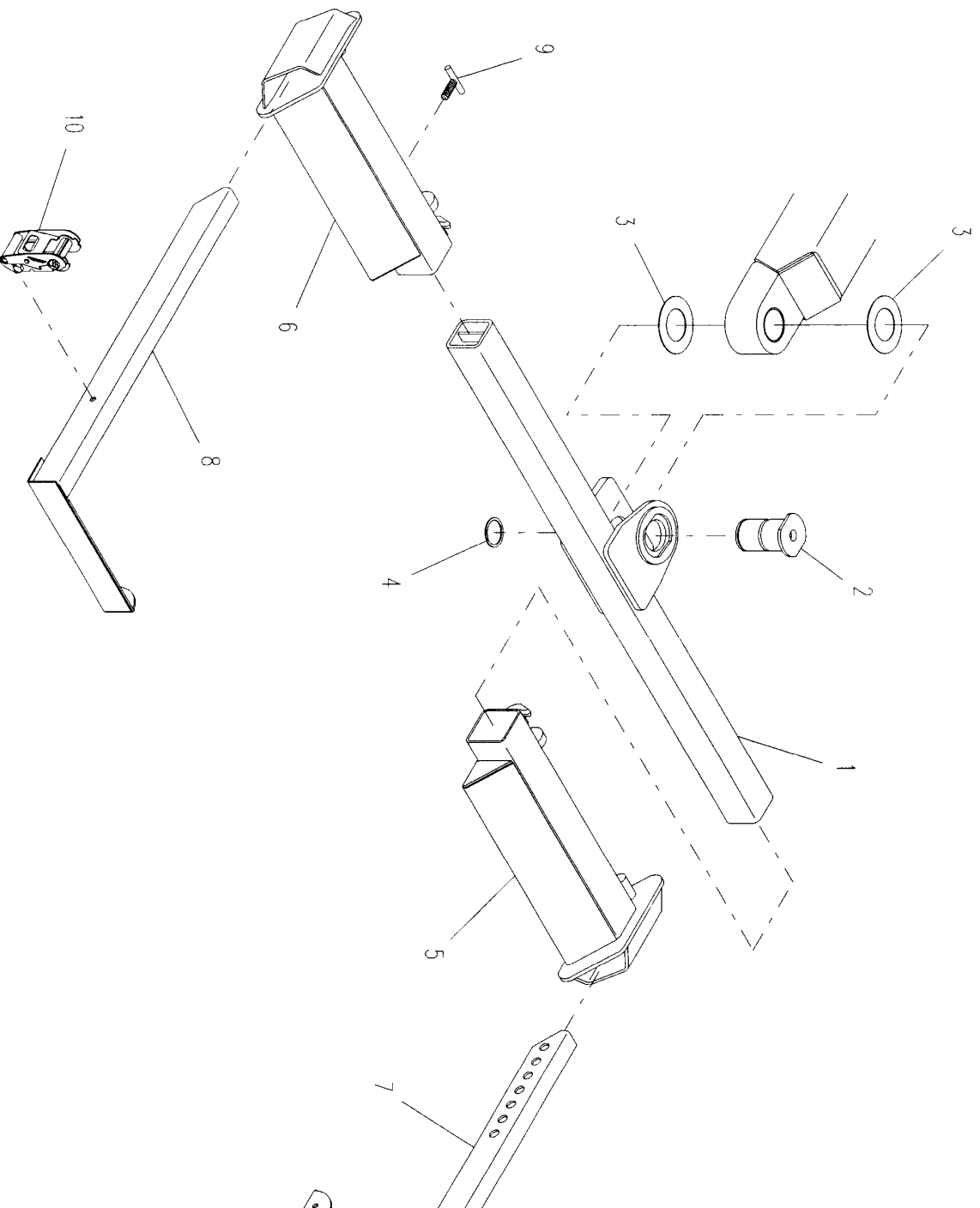
4.24

Rev. _____
Date _____

3000# WHEELLIFT GRID ASSEMBLY



4000# WHEELLIFT GRID ASSEMBLY



PARTS LIST — 4000# WHEELLIFT GRID ASSEMBLY

| Ref. No. | Part No. | Description | Qty. |
|-----------------|-----------------|--------------------|-------------|
| 1 | 3913000061 | Pivot Tube | 1 |
| 2 | 4691000103 | Pin | 1 |
| 3 | 4949000047 | Washer | 2 |
| 4 | 7754000024 | Retaining Ring | 1 |
| 5 | 3484000030 | Grid Weldment - RH | 1 |
| 6 | 3484000031 | Grid Weldment - LH | 1 |
| 7 | 3020000038 | L-Arm - RH | 1 |
| 8 | 3020000037 | L-Arm - LH | 1 |
| 9 | 3551000036 | T-Handle | 2 |
| 10 | 7894000034 | Ratchet and Strap | 2 |

JERR-DAN

An Oshkosh Truck Corporation Company

4.27

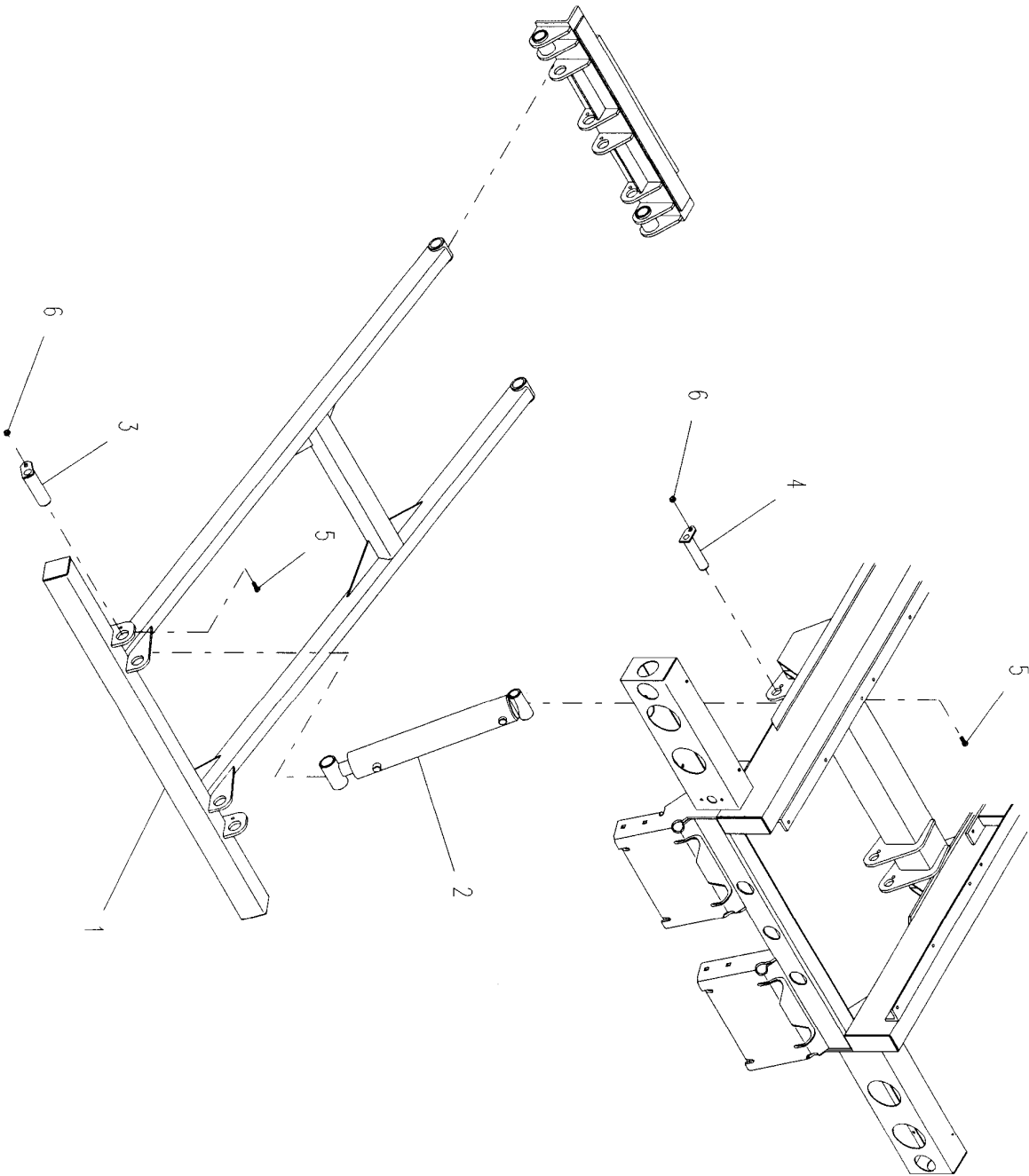
Rev. _____

Date _____

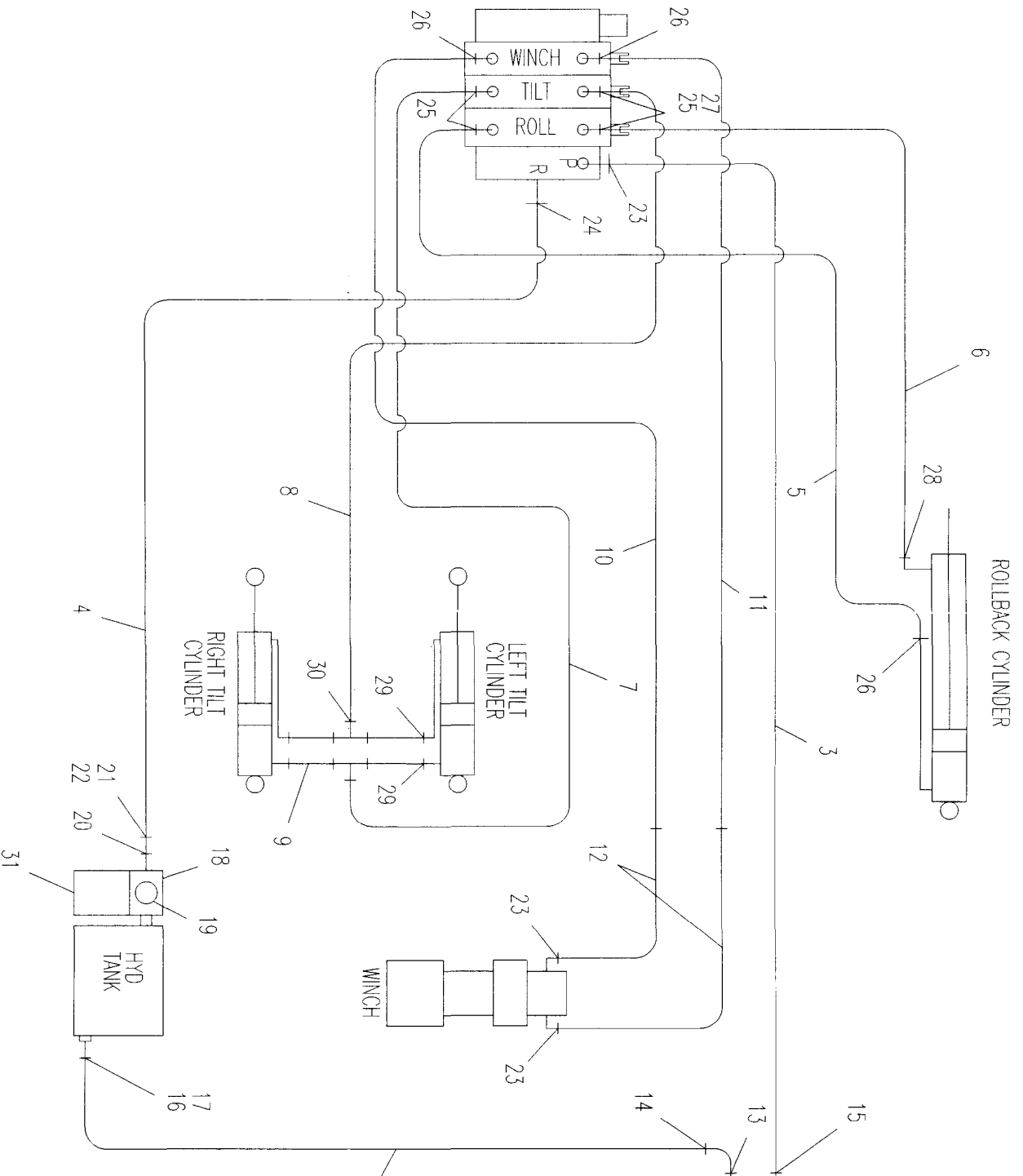
PARTS LIST — HYDRAULIC REAR DOCK STABILIZER

| Ref. No. | Part No. | Description | Qty. |
|-----------------|-----------------|--------------------|-------------|
| 1 | 3849000010 | Stabilizer Arm | 1 |
| 2 | 3320000069 | Cylinder Assembly | 2 |
| 3 | 3691000165 | Pin | 2 |
| 4 | 3691000073 | Pin | 2 |
| 5 | 7115160850 | Capscrew | 4 |
| 6 | 7660162301 | Locknut | 4 |

HYDRAULIC REAR DOCK STABILIZER



HYDRAULIC COMPONENTS



4.30

Rev. _____
Date _____

PARTS LIST — HYDRAULIC COMPONENTS

| Ref. No. | Part No. | Description | Qty. |
|----------|------------|-------------------------|------|
| 1 | 7724000021 | Pump | 1 |
| 2 | 4570000112 | Hose | 1 |
| 3 | 4567130226 | Hose Assembly (A) | 1 |
| | 4567130238 | Hose Assembly (B) | |
| | 4567130244 | Hose Assembly (C) | |
| | 4567130248 | Hose Assembly (D) | |
| | 4567130256 | Hose Assembly (E) | |
| 4 | 4570000101 | Hose (A) | 1 |
| | 4570000102 | Hose (B) | |
| | 4570000113 | Hose (C) | |
| | 4570000114 | Hose (D) | |
| | 4570000115 | Hose (E) | |
| 5 | 4567123047 | Hose Assembly | 1 |
| 6 | 4567122047 | Hose Assembly | 1 |
| 7 | 4567123104 | Hose Assembly | 1 |
| 8 | 4567122100 | Hose Assembly | 1 |
| 9 | 4567120020 | Hose Assembly | 4 |
| 10 | 4569433122 | Hose Assembly | 1 |
| 11 | 4569432122 | Hose Assembly | 1 |
| 12 | 4567430129 | Hose Assembly (A,B) | 2 |
| | 4567430153 | Hose Assembly (C,D,E) | |
| 13 | 7445081643 | Adapter | 1 |
| 14 | 7443000023 | Elbow | 1 |
| 15 | 7443000101 | Adapter | 1 |
| 16 | 7443000013 | Nipple | 1 |
| 17 | 7274000002 | Clamp | 1 |
| 18 | 7430000003 | Filter Head and Element | 1 |
| 19 | 7470000002 | Gauge | 1 |
| 20 | 7445161250 | Reducer | 1 |
| 21 | 7443000169 | Adapter | 1 |
| 22 | 7274000047 | Clamp | 1 |
| 23 | 7445081045 | Elbow | 3 |
| 24 | 7443000168 | Adapter | 1 |
| 25 | 7445060843 | Adapter | 4 |
| 26 | 7445080843 | Adapter | 3 |
| 27 | 7443000196 | Restrictor | 2 |
| 28 | 7445080845 | Elbow | 1 |
| 29 | 7445060645 | Elbow | 4 |
| 30 | 7445060637 | Tee | 2 |
| 31 | 7431000001 | Filter Element | 1 |

- A - 22' Deck, 138" CA Chassis
- B - 22' Deck, 150" CA Chassis
- C - 24' Deck, 156" CA Chassis
- D - 24' Deck, 160" CA Chassis
- E - 24' Deck, 168" CA Chassis

JERR-DAN

An Oshkosh Truck Corporation Company

4.31

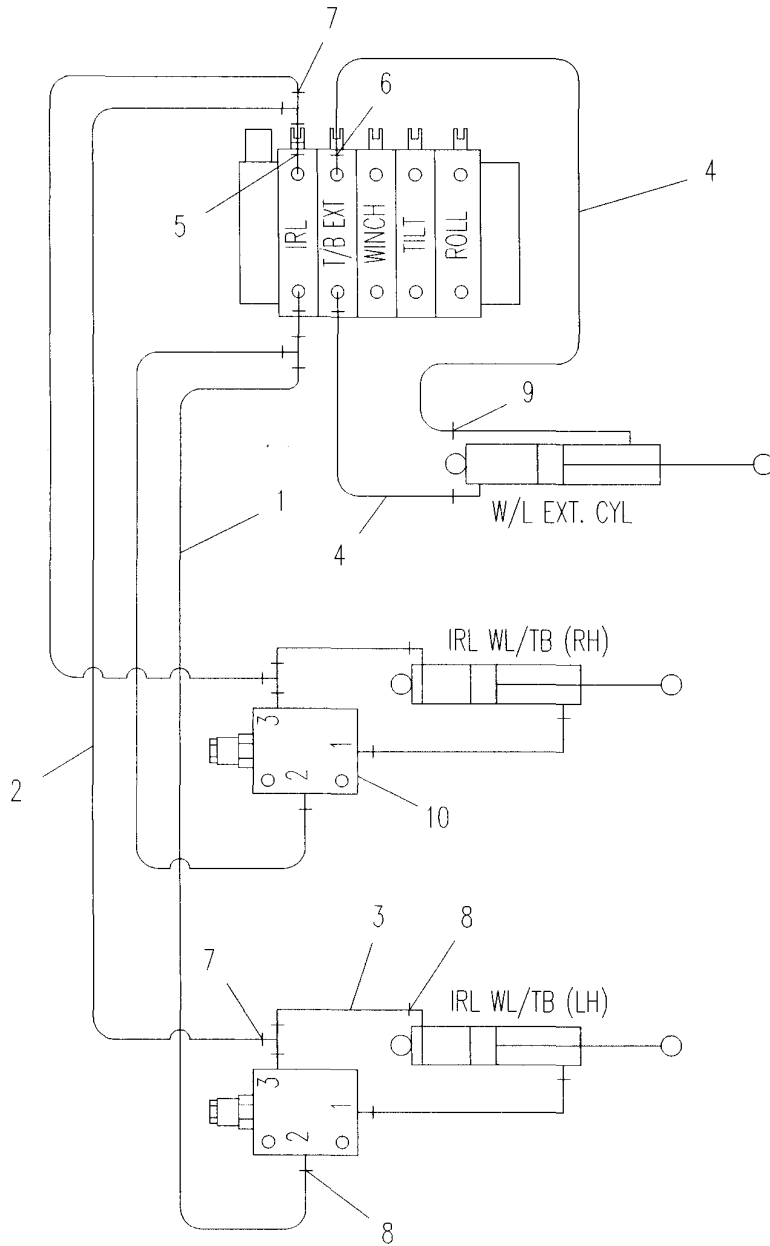
Rev. _____

Date _____

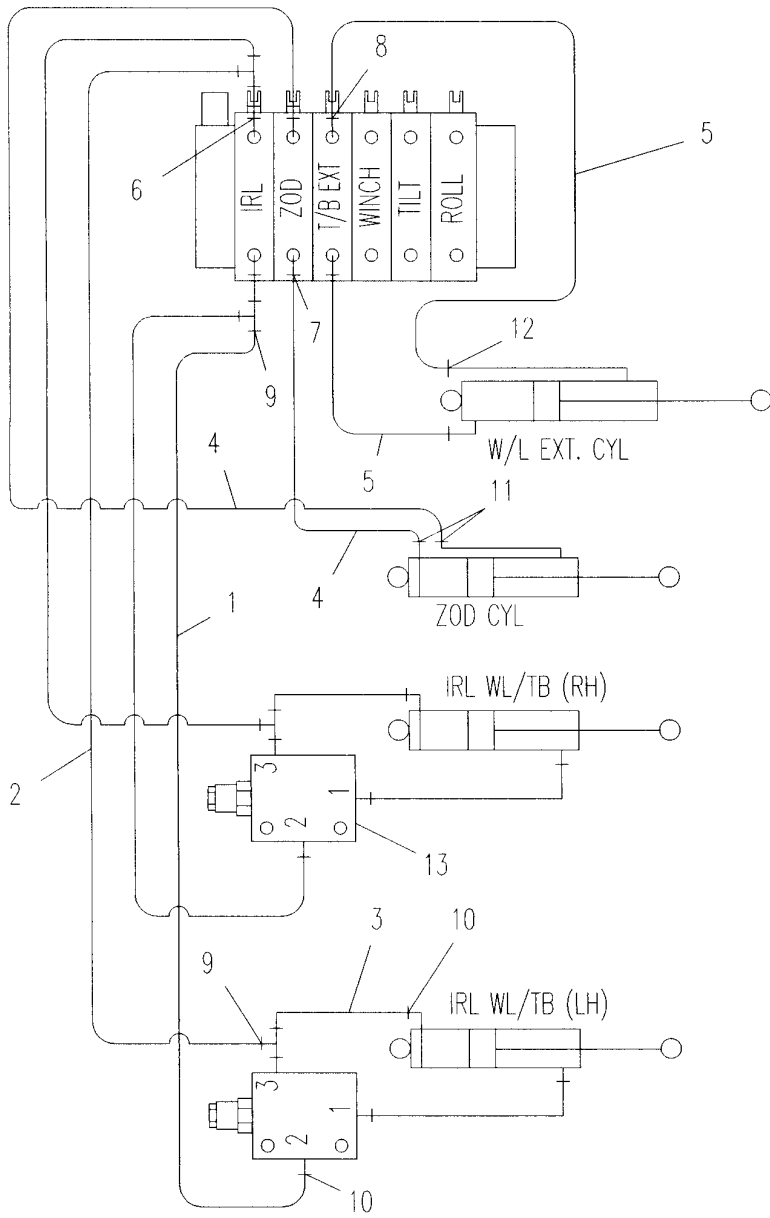
PARTS LIST — HYDRAULIC COMPONENTS - IRL WHEELLIFT

| Ref. No. | Part No. | Description | Qty. |
|-----------------|-----------------|-----------------------|-------------|
| 1 | 4567122043 | Hose Assembly | 2 |
| 2 | 4567123045 | Hose Assembly | 2 |
| 3 | 4567122013 | Hose Assembly | 2 |
| 4 | 4567110019 | Hose Assembly | 2 |
| 5 | 7443000129 | Reducer | 2 |
| 6 | 7443040643 | Adapter | 2 |
| 7 | 7445060648 | Tee | 4 |
| 8 | 7445060645 | Elbow | 4 |
| 9 | 7445040446 | Elbow | 2 |
| 10 | 7935000183 | Counter Balance Valve | 2 |

HYDRAULIC COMPONENTS - IRL WHEELIFT



HYDRAULIC COMPONENTS - ZOD WHELLIFT



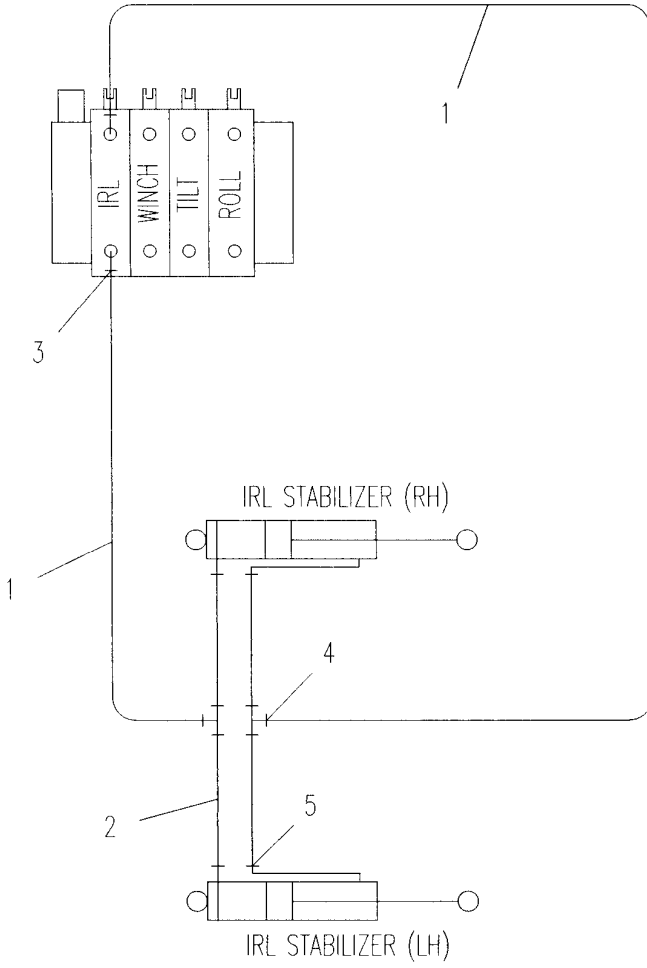
PARTS LIST — HYDRAULIC COMPONENTS - ZOD WHEELIFT

| Ref. No. | Part No. | Description | Qty. |
|-----------------|-----------------|-----------------------|-------------|
| 1 | 4567122043 | Hose Assembly | 2 |
| 2 | 4567123045 | Hose Assembly | 2 |
| 3 | 4567122013 | Hose Assembly | 2 |
| 4 | 4567122030 | Hose Assembly | 2 |
| 5 | 4567110034 | Hose Assembly | 2 |
| 6 | 7443000129 | Reducer | 2 |
| 7 | 7445060843 | Adapter | 2 |
| 8 | 7443040643 | Adapter | 2 |
| 9 | 7445060648 | Tee | 4 |
| 10 | 7445060645 | Elbow | 2 |
| 11 | 7445060643 | Adapter | 2 |
| 12 | 7445040446 | Elbow | 2 |
| 13 | 7935000183 | Counter Balance Valve | 2 |

PARTS LIST — HYDRAULIC COMPONENTS - STABILIZER

| Ref. No. | Part No. | Description | Qty. |
|-----------------|-----------------|--------------------|-------------|
| 1 | 4567122035 | Hose Assembly | 2 |
| 2 | 4567120019 | Hose Assembly | 4 |
| 3 | 7445060843 | Adapter | 2 |
| 4 | 7445060637 | Tee | 2 |
| 5 | 7445060645 | Elbow | 2 |

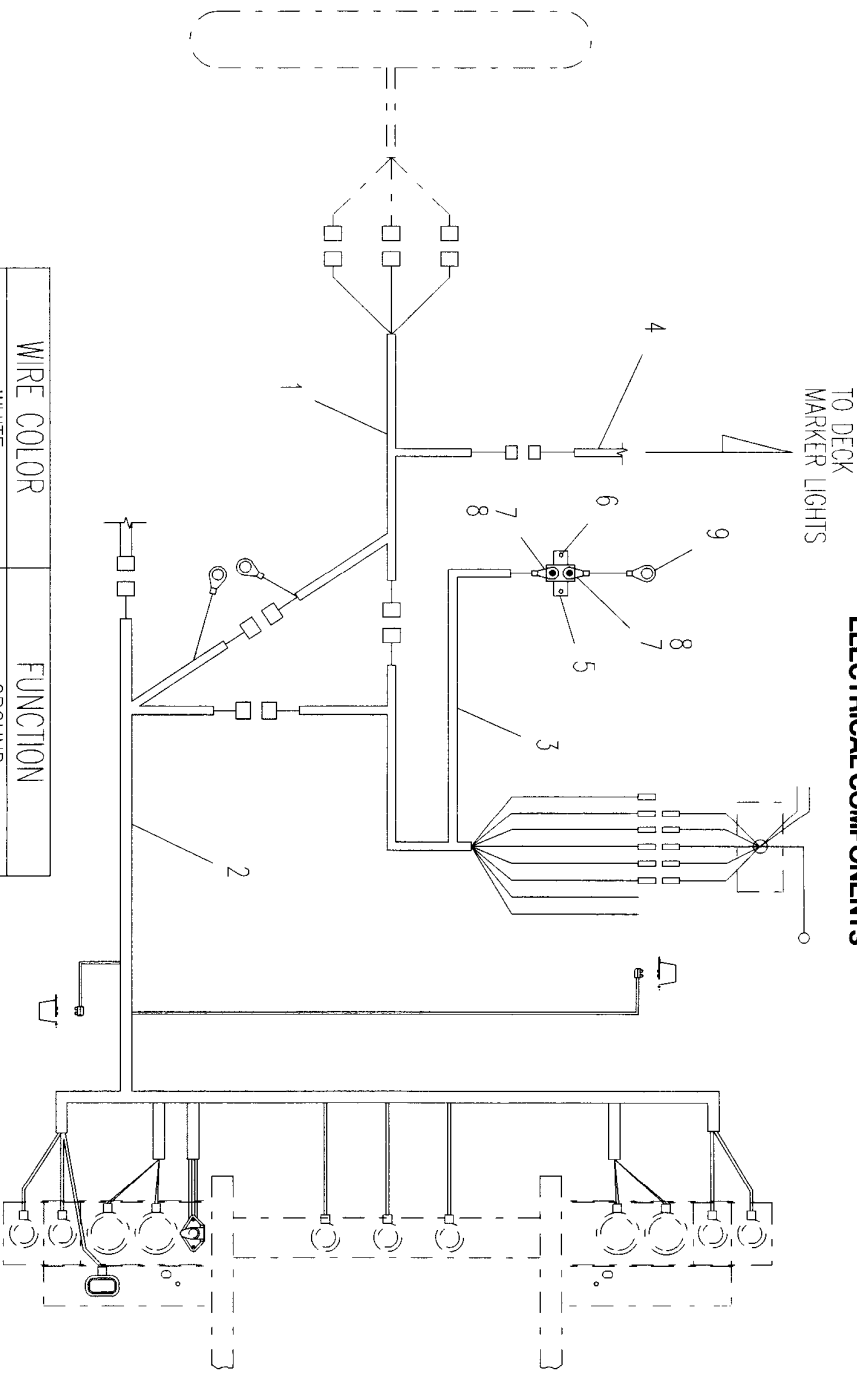
HYDRAULIC COMPONENTS - STABILIZER



PARTS LIST — ELECTRICAL COMPONENTS

| Ref. No. | Part No. | Description | Qty. |
|-----------------|-----------------|--------------------------------|-------------|
| 1 | 7552000098 | Wiring Harness - Subframe/Deck | 1 |
| 2 | 7552000135 | Wiring Harness - Subframe | 1 |
| 3 | 7552000065 | Wiring Harness - Subframe/Cab | 1 |
| 4 | 7552000179 | Wiring Harness - Deck | 1 |
| 5 | 7457000004 | Breaker | 1 |
| 6 | 7790100856 | Screw | 2 |
| 7 | 7345221902 | Terminal | 2 |
| 8 | 7950100151 | Washer | 2 |
| 9 | 7345241902 | Terminal | 1 |

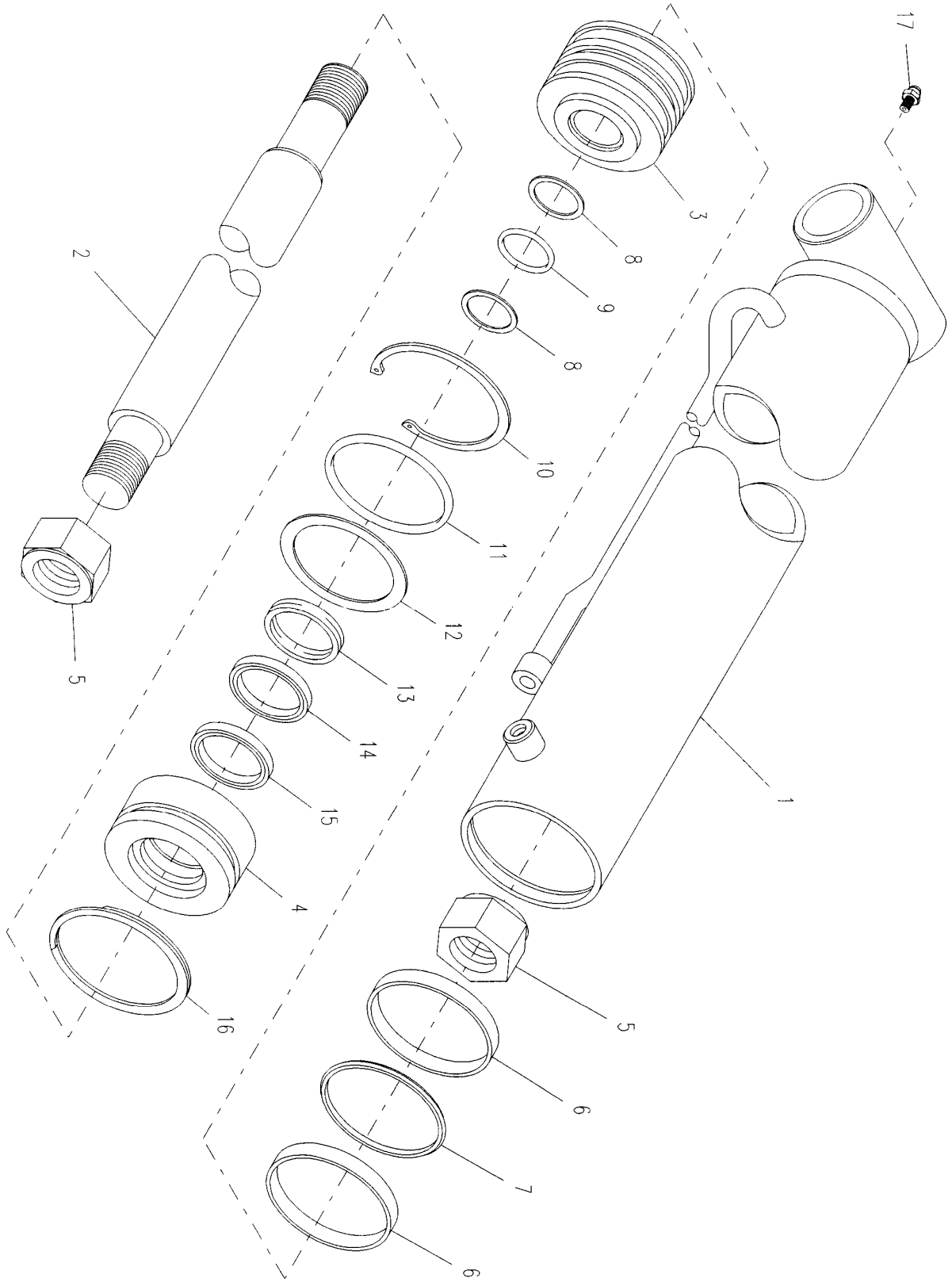
ELECTRICAL COMPONENTS



| WIRE COLOR | FUNCTION |
|---------------|------------------|
| WHITE | GROUND |
| BROWN | CLEARANCE |
| GREEN | RH STOP/TURN |
| YELLOW | LH STOP/TURN |
| BLACK | BACK-UP |
| BLUE | AUX |
| PURPLE | FLOOD |
| GRAY | BEACON (ROTATOR) |
| ORANGE | AUX1 (FLASHER) |
| LT BLUE/BLACK | OPTIONAL |
| LT BLUE | AUX2 |
| RED | AUX POWER |

ROLLBACK CYLINDER

332000074



PARTS LIST — ROLLBACK CYLINDER

332000074

| Ref. No. | Part No. | Description | Qty. |
|-----------------|-----------------|--------------------|-------------|
| 1 | 3071000068 | Barrel Weldment | 1 |
| 2 | 4763000093 | Rod | 1 |
| 3 | 4698000009 | Piston | 1 |
| 4 | 4553000010 | Head | 1 |
| 5 | 7660342031 | Locknut | 2 |
| 6 | 7796000013* | Wear Ring | 2 |
| 7 | 7796000064* | Locking "T" Seal | 1 |
| 8 | 7755226609* | Back-up Ring | 2 |
| 9 | 7755226000* | "O" Ring | 1 |
| 10 | 7754000016* | Retaining Ring | 1 |
| 11 | 7755338000* | "O" Ring | 1 |
| 12 | 7755338609* | Back-up Ring | 1 |
| 13 | 7754000012* | Wear Ring | 1 |
| 14 | 7796000025* | Rod Seal | 1 |
| 15 | 7796000011* | Rod Wiper Seal | 1 |
| 16 | 7754000027* | Retaining Ring | 1 |
| 17 | 7440030000 | Grease Fitting | 1 |

*Available only in Service Kit #7577250025

PARTS LIST — TILT CYLINDER

3320000073

| Ref. No. | Part No. | Description | Qty. |
|-----------------|-----------------|--------------------|-------------|
| 1 | 3071000069 | Barrel Weldment | 1 |
| 2 | 3763000032 | Rod Weldment | 1 |
| 3 | 4698000007 | Piston | 1 |
| 4 | 4553000008 | Head | 1 |
| 5 | 7660262031 | Locknut | 1 |
| 6 | 7754000003* | Wear Ring | 2 |
| 7 | 7796000063* | Locking "T" Seal | 1 |
| 8 | 7755224609* | Back-up Ring | 2 |
| 9 | 7755224000* | "O" Ring | 1 |
| 10 | 7754000002* | Retaining Ring | 1 |
| 11 | 7755334000* | "O" Ring | 1 |
| 12 | 7755334609* | Back-up Ring | 1 |
| 13 | 7754000004* | Wear Ring | 1 |
| 14 | 7796000024* | Rod Seal | 1 |
| 15 | 7796000008* | Rod Wiper Seal | 1 |
| 16 | 7754000026* | Retaining Ring | 1 |
| 17 | 7440030000 | Grease Fitting | 2 |

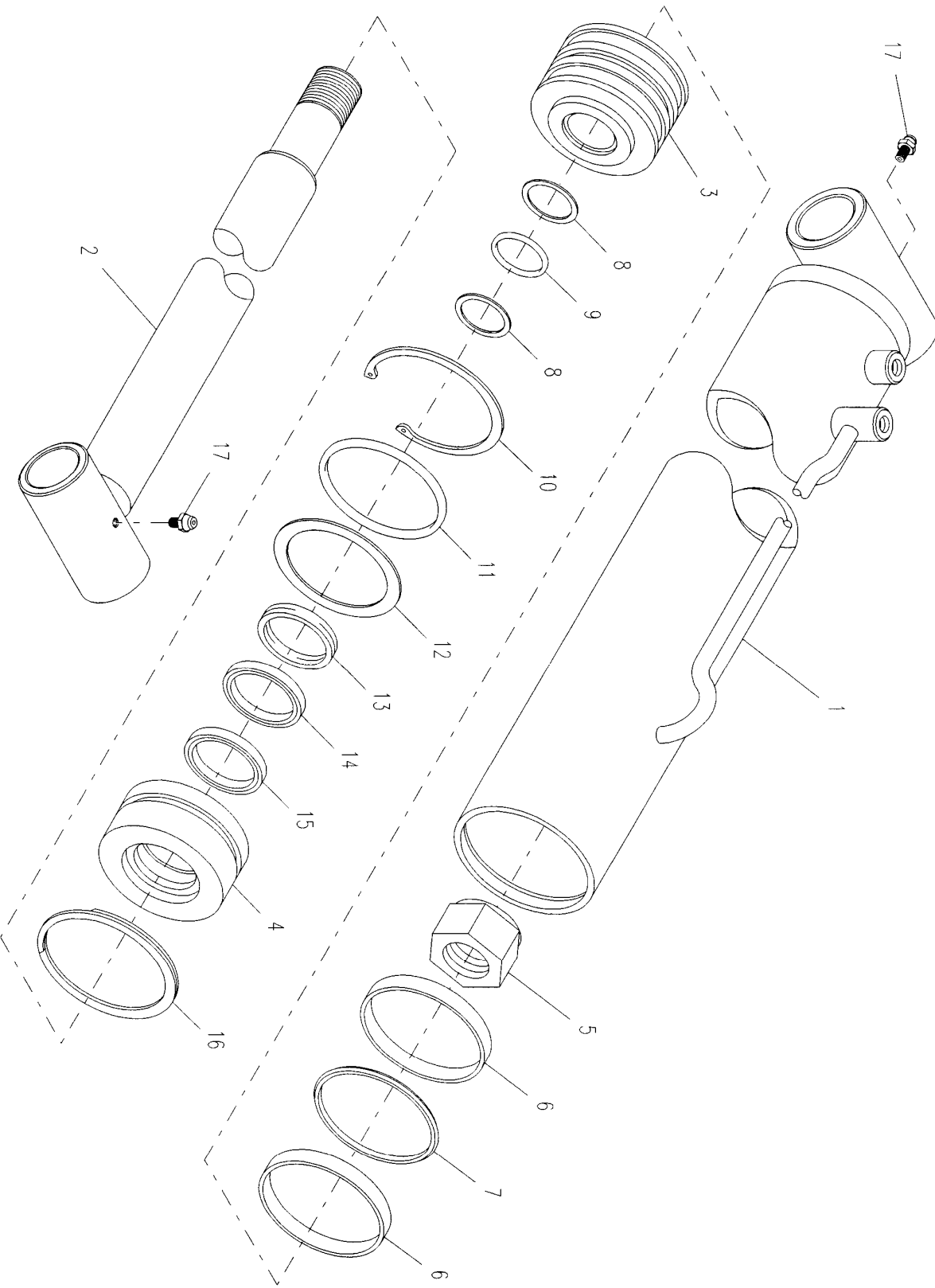
*Available only in Service Kit #7577250042



4.42

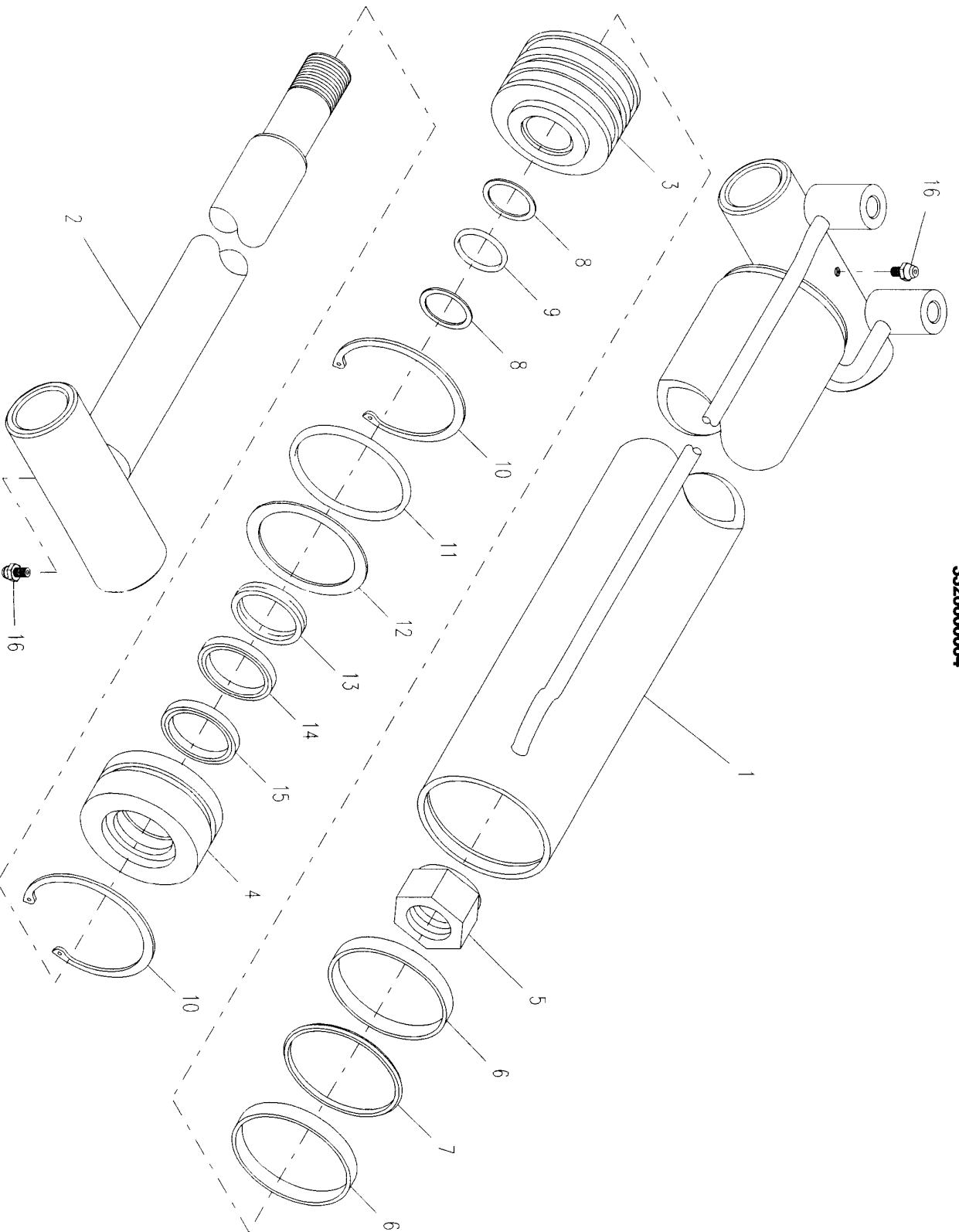
Rev. _____
Date _____

TILT CYLINDER
3320000073



WHEELIFT EXTEND CYLINDER

3320000064



PARTS LIST — WHEELIFT EXTEND CYLINDER

332000064

| Ref. No. | Part No. | Description | Qty. |
|-----------------|-----------------|--------------------|-------------|
| 1 | 3071000060 | Barrel Weldment | 1 |
| 2 | 3763000074 | Rod Weldment | 1 |
| 3 | 4698000015 | Piston | 1 |
| 4 | 4553000016 | Head | 1 |
| 5 | 7660262031 | Locknut | 1 |
| 6 | 7754000053* | Wear Ring | 2 |
| 7 | 7796000067* | Locking "T" Seal | 1 |
| 8 | 7755222609* | Back-up Ring | 2 |
| 9 | 7755222000* | "O" Ring | 1 |
| 10 | 7754000051* | Retaining Ring | 2 |
| 11 | 7755330000* | "O" Ring | 1 |
| 12 | 7755330609* | Back-up Ring | 1 |
| 13 | 7754000054* | Wear Ring | 1 |
| 14 | 7796000045* | Rod Seal | 1 |
| 15 | 7796000046* | Rod Wiper Seal | 1 |
| 16 | 7440030000 | Grease Fitting | 2 |

*Available only in Service Kit #7577250206



4.45

Rev. _____
Date _____

PARTS LIST — IRL CYLINDER 3000# WHEELIFT

332000069

| Ref. No. | Part No. | Description | Qty. |
|-----------------|-----------------|--------------------|-------------|
| 1 | 3071000065 | Barrel Weldment | 1 |
| 2 | 3763000086 | Rod Weldment | 1 |
| 3 | 4698000007 | Piston | 1 |
| 4 | 4553000008 | Head | 1 |
| 5 | 7660262031 | Locknut | 1 |
| 6 | 7754000003* | Wear Ring | 2 |
| 7 | 7796000063* | Locking "T" Seal | 1 |
| 8 | 7755224609* | Back-up Ring | 2 |
| 9 | 7755224000* | "O" Ring | 1 |
| 10 | 7754000002* | Retaining Ring | 1 |
| 11 | 7755334000* | "O" Ring | 1 |
| 12 | 7755334609* | Back-up Ring | 1 |
| 13 | 7754000004* | Wear Ring | 1 |
| 14 | 7796000024* | Rod Seal | 1 |
| 15 | 7796000008* | Rod Wiper Seal | 1 |
| 16 | 7754000026* | Retaining Ring | 1 |
| 17 | 7440030000 | Grease Fitting | 1 |
| 18 | 7440030200 | Grease Fitting | 1 |

*Available only in Service Kit #7577250024

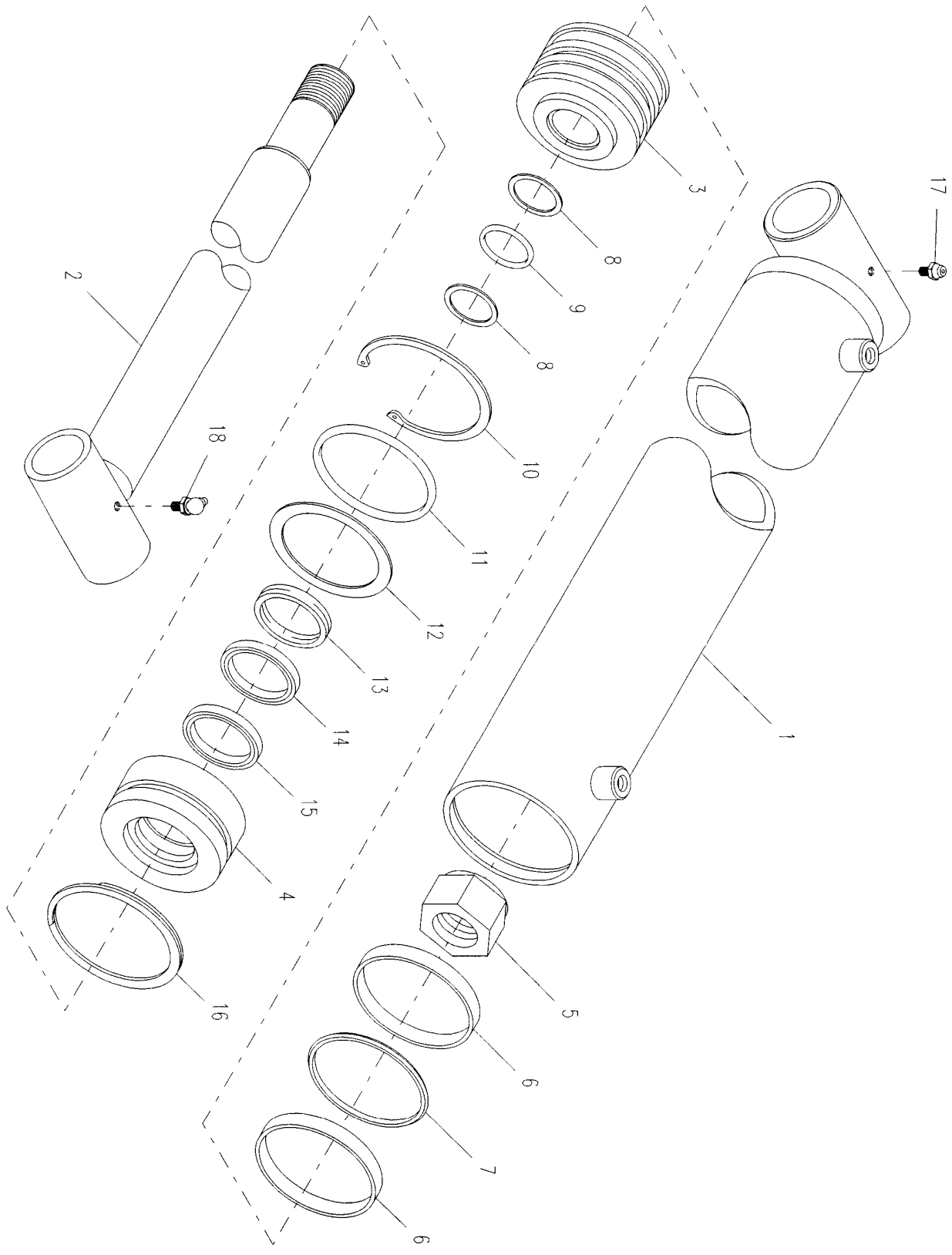


4.46

Rev. _____
Date _____

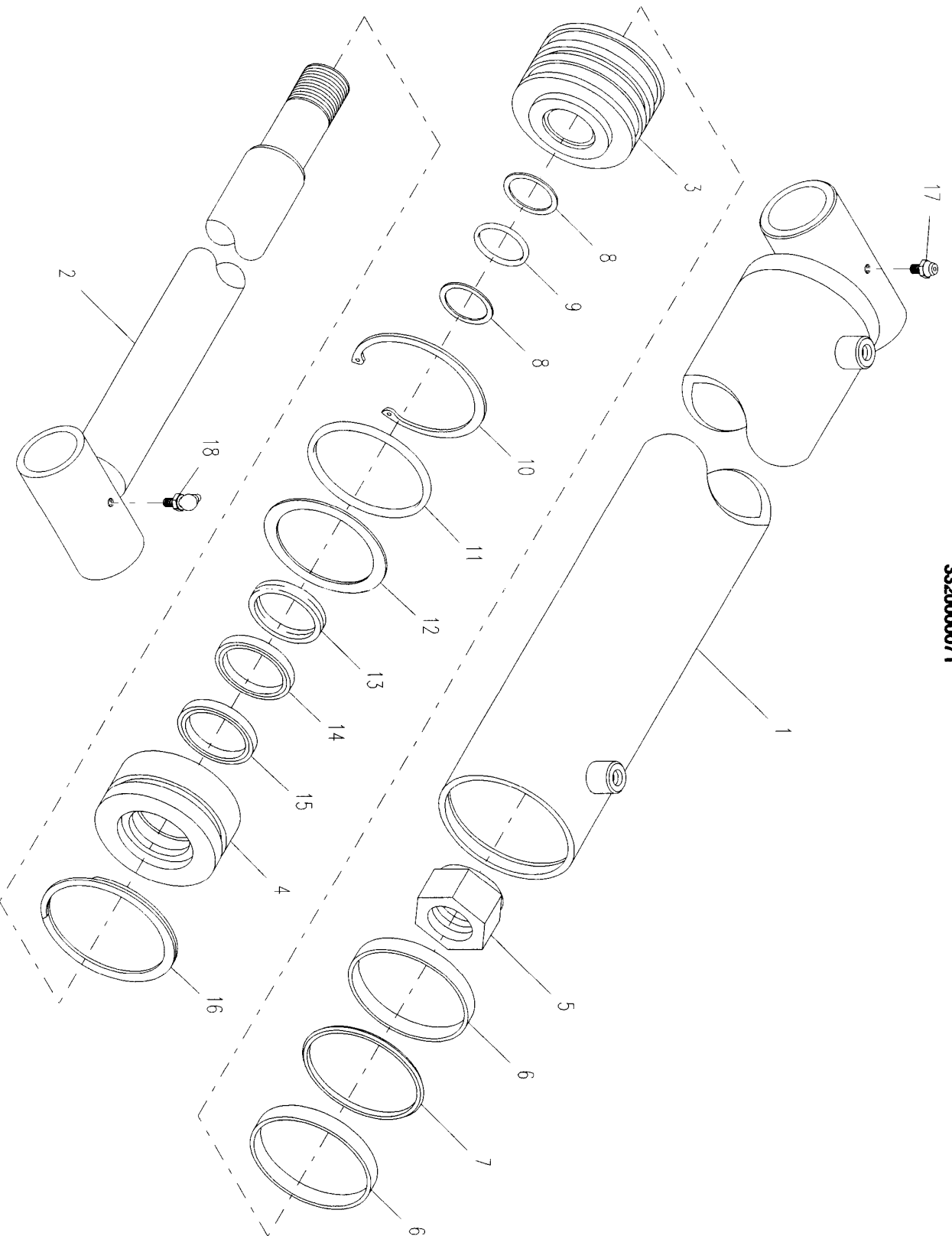
IRL CYLINDER 3000# WHEELLIFT

3320000069



IRL CYLINDER 4000# WHEELLIFT

3320000071



PARTS LIST — IRL CYLINDER 4000# WHEELIFT

332000071

| Ref. No. | Part No. | Description | Qty. |
|-----------------|-----------------|--------------------|-------------|
| 1 | 3071000066 | Barrel Weldment | 1 |
| 2 | 3763000088 | Rod Weldment | 1 |
| 3 | 4698000007 | Piston | 1 |
| 4 | 4553000008 | Head | 1 |
| 5 | 7660262031 | Locknut | 1 |
| 6 | 7754000003* | Wear Ring | 2 |
| 7 | 7796000063* | Locking "T" Seal | 1 |
| 8 | 7755224609* | Back-up Ring | 2 |
| 9 | 7755224000* | "O" Ring | 1 |
| 10 | 7754000002* | Retaining Ring | 1 |
| 11 | 7755334000* | "O" Ring | 1 |
| 12 | 7755334609* | Back-up Ring | 1 |
| 13 | 7754000004* | Wear Ring | 1 |
| 14 | 7796000024* | Rod Seal | 1 |
| 15 | 7796000008* | Rod Wiper Seal | 1 |
| 16 | 7754000026* | Retaining Ring | 1 |
| 17 | 7440030000 | Grease Fitting | 1 |
| 18 | 7440030200 | Grease Fitting | 1 |

*Available only in Service Kit #7577250024



4.49

Rev. _____
Date _____

PARTS LIST — ZOD CYLINDER

332000070

| Ref. No. | Part No. | Description | Qty. |
|-----------------|-----------------|--------------------|-------------|
| 1 | 3071000067 | Barrel Weldment | 1 |
| 2 | 3763000087 | Rod Weldment | 1 |
| 3 | 4698000015 | Piston | 1 |
| 4 | 4553000016 | Head | 1 |
| 5 | 7660262031 | Locknut | 1 |
| 6 | 7754000053* | Wear Ring | 2 |
| 7 | 7796000067* | Locking "T" Seal | 1 |
| 8 | 7755222609* | Back-up Ring | 2 |
| 9 | 7755222000* | "O" Ring | 1 |
| 10 | 7754000051* | Retaining Ring | 2 |
| 11 | 7755330000* | "O" Ring | 1 |
| 12 | 7755330609* | Back-up Ring | 1 |
| 13 | 7754000054* | Wear Ring | 1 |
| 14 | 7796000045* | Rod Seal | 1 |
| 15 | 7796000046* | Rod Wiper Seal | 1 |
| 16 | 7440030000 | Grease Fitting | 1 |
| 17 | 7440030200 | Grease Fitting | 1 |

*Available only in Service Kit #7577250206



4.50

Rev. _____
Date _____

ZOD CYLINDER

332000070

